

Ghid rapid de utilizare
NVR PNI House 960P
16 canale HD 1.3MP
 pentru camere cu IP

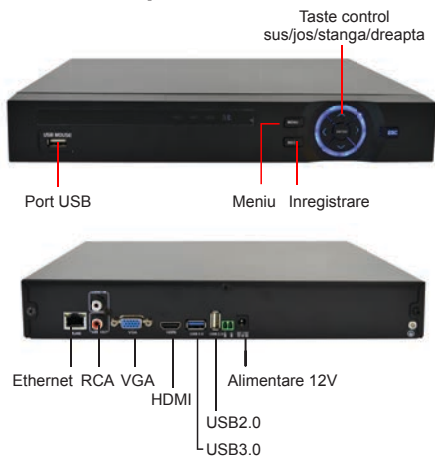


1.

1. Introducere:

Acest manual este doar un ghid rapid de utilizare. Pentru informatii mai detaliate, va rugam sa consultati CD-ul inclus in pachet.

2. Descriere produs:



2.

3. Pornirea dispozitivului si Autentificarea in sistem:

3.1 Instalarea HDD-ului

Inainte de a porni NVR-ul, instalati Hard Disk-ul. Treceti peste acest pas daca nu doriti stocarea inregistrarilor.

3.2 Pornirea NVR-ului

Alimentati NVR-ul la curent. LED-urile de pe NVR se aprind.

3.3 Inchiderea NVR-ului

NVR-ul se poate inchide din software-ul dedicat ([Main menu]->[Logout]->[Shutdown]) sau direct din NVR, scotand alimentatorul din priza.

NOTA: Daca NVR-ul se inchide brusc (cum ar fi in cazul unei pene de curent), dupa ce l-ati repornit, acesta se va intoarce la stadiul de functionare anterior.

3.4 Autentificarea in sistem

Dupa pornirea NVR-ului, trebuie sa va logati in sistem folosind numele de utilizator "admin" fara parola.

3.

Campul pentru parola, ramane necompletat.

NOTE:

Schimbati parola imediat dupa prima autentificare in sistem.

Daca ati introdus gresit parola de 3 ori, va porni alarma. Daca ati introdus gresit parola de 5 ori, contul dumneavoastra va fi blocat. (Dupa repornirea sistemului sau dupa jumatate de ora, contul se va debloca automat).



4.

4. Setari retea:

Accesati [Main menu]->[System]->[Network]:

[IP address]: implicit 192.168.1.10

[Subnet mask]: implicit 255.255.255.0

[Gateway]: implicit 192.168.1.1



NOTA: Camera video trebuie sa fie in aceeasi retea cu router-ul si sa aiba acelasi IP cu acesta. Accesati [Main menu]->[System]->[Network] si activati DHCP.

5.

5. Setari inregistrare:

Pentru a putea inregistra, in NVR trebuie sa fie instalat un HDD.

5.1 Formatare HDD

Dupa instalarea HDD-ului, porniti NVR-ul si accesati [Main menu] ->[Advanced]->[Storage] pentru a formata HDD-ul. Apoi, setati HDD-ul pe modul citire-scriere.

NOTA: Pentru a inregistra, este obligatoriu ca macar unul din cele doua HDD-uri instalate sa fie setat pe modul citire-scriere.

5.2 Setari video

Accesati [Main menu]->[Record]->[Record conf.]



6.

[Channel] Alegeti canalul dorit. Click pe All pentru a selecta toate canalele [Redundancy] Alegeti aceasta functie pentru a asigura un dublu backup [Length] Setati lungimea clipurilor video intre 1-120 minute. Valoarea implicita este de 60 minute.

[Mode] Setati modul de inregistrare: manual, programat sau stop.

[Manual] In modul Manual, inregistrarea se face non-stop timp de 24 de ore.

[Stop] In modul Stop, inregistrarea se intrerupe indiferent de modul si tipul de inregistrare stabilit anterior.

[Period] Inregistrarea are loc doar in intervalele orare prestabilite.

[Record type]: obisnuit, la detectie miscare, la alarma

[Regular] Inregistrare in intervalul orar prestabilit. Fisierul are extensia R.

[Detect] Inregistrarea are loc in intervalul orar prestabilit, doar la detectie miscare, lipsa imagine sau functionare anormala. Fisierul are extensia M.

7.

[Alarm] Inregistrarea are loc la pornirea alarmei.

6. Redare inregistrari:

Sunt doua metode prin care puteti reda inregistrari video de pe HDD.

1. Folosind meniul cu scurtaturi
2. Accesand [Main menu]->[Record]->[Play Back]

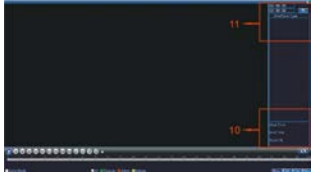
NOTA: HDD-ul pe care s-au salvat inregistrari trebuie sa fie setat pentru modul citire-scriere sau doar-citire.



1. Control redare inregistrari
2. Bara progres inregistrare
3. Mod inregistrare
4. Selectare interval inregistrare

8.

5. Schimbare intre mod timp/fisier
6. Cautare fisier
7. Selectare canal
8. Selectare data
9. Selectare unitate de stocare
10. Informatii fisier
11. Lista fisiere
12. Cautare dupa interval orar



Faceti dublu click pe fisierul video pe care doriti sa-l redati.

7. Administrare canale:

Accesati [Main menu]->[System]->[Digital]->[Digital channels] si adaugati camera IP in lista canalelor digitale.

9.

[Enable] - activare Setari
 [Channel] - alegeti numarul canalului pentru a adauga camera IP
 [Connection mode] - conexiune simpla (permite conexiunea la un singur dispozitiv) sau conexiune multipla care permite conexiunea la mai multe dispozitive ce vor fi afisate unul cate unul la intervale de maxim 10 secunde.
 [Add] - Dupa click "Add" urmatoarea interfata va fi afisata:



10.

[Search] - Cauta si afiseaza adresele IP din aceeasi retea. Alegeti o adresa IP. Numele dispozitivului, Portul si Protocolul vor fi completate automat.
 [Protocol] - suporta NETTP, ONVIF si Toate. Implicit este All (Toate).
 [OK] - Click pentru a finaliza procedura de adaugare camera. Mergeti inapoi la interfata Canale digitale si selectati camera adaugata anterior pentru previzualizare.

8. Acces LAN:

Conectati NVR-ul la internet pentru a-l putea administra din Internet Explorer.

8.1 Acces prin IE

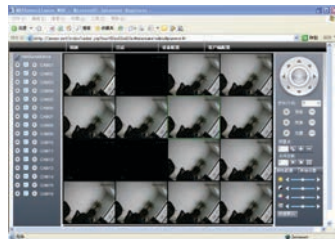
Deschideti Internet Explorer, introduceti adresa IP in bara de adresa a browserului sub forma: <http://192.168.1.10>

8.2 Nume utilizator si parola

Valorile implicite sunt:
 - utilizator: admin
 - parola: necompletat

11.

Va recomandam sa schimbati parola de administrare imediat dupa prima logare in sistem.



NOTA: Pentru accesare via Internet Explorer trebuie sa instalati plug-in-ul ActiveX.

Setati nivelul de securitate al browserului:

[Internet options] -> [Security] -> [Custom level] -> [ActiveX] (click Enable la toate optiunile).

Pentru instalarea plug-in-ului, accesati <http://xmeye.net> sau instalati-l de pe CD-ul inclus in pachet [Software]->[IEActive]->IE plug-in_V1.1.0.78.exe.

12.

8.3 Accesare prin dispozitive mobile

Retea compatibila: WiFi, 3G

Sistem de operare: Android, iOS

Software: VmEyeCloud

Sursa descarcare software: Google Play, AppStore.

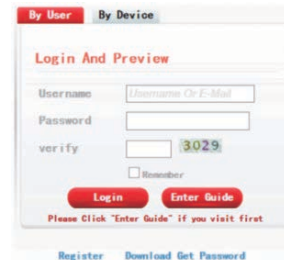
NOTA: Cand camera video este in retea publica, poate fi accesata si prin VmEyeSuper.

9. Operatiuni Cloud:

9.1 Acces PC

a. Accesati <http://xmeye.net>.

Autentificati-va:

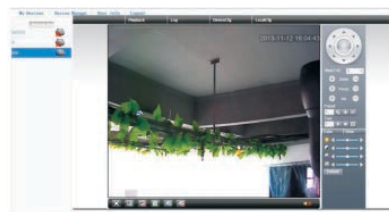


13.

b. Adaugati camera video urmand indicatiile



c. Click Login pentru a accesa interfata Cloud. Faceti click in partea stanga a ecranului pe o camera pentru previzualizare.



14.

d. Dupa ce ati configurat in mod corect camera, o puteti accesa de oriunde atat timp cat aveti acces la internet.

NOTA: Semnul rosu din partea stanga a ecranului de previzualizare indica faptul ca respectiva camera video nu este conectata la serviciul cloud.

9.2 Accesare prin dispozitive mobile

Retea compatibila: WiFi, 3G

Sistem de operare: Android, iOS

Software: VmEyeCloud

Sursa descarcare software: Google Play, AppStore.



15.

10. Specificatii tehnice:

- Intrare video 16 x 960P
- Iesire video 1 x VGA / 1 x HDMI (1920x1080)
- Intrare audio: 1 x RCA
- Iesire audio: 1 x RCA
- Rezolutie: PAL 960P (1280 x 960) / 720P (1280 x 720)
- Mod inregistrare: Manuala / Alarma / Detectie miscare / Continua
- Suporta 2 x SATA HDD pana la 4TB fiecare (HDD-ul nu este inclus)
- 1 x USB2.0 / 1 x USB 3.0
- Suporta monitorizare de pe dispozitive mobile: iPhone, iPad, BlackBerry, Android, Windows
- Compatibil cu protocolul ONVIF 2.0/2.2
- Port Ethernet 10 / 100 / 1000 Mbps
- Suporta functia iCloud (P2P)
- Compatibil cu: Google Chrome, Internet Explorer, Mozilla Firefox, Safari Browser
- Temperatura functionare: 0°C ~ 55°C

16.

Fast Manual Instructions

NVR PNI House 960P 16 CH HD 1.3MP for IP cameras

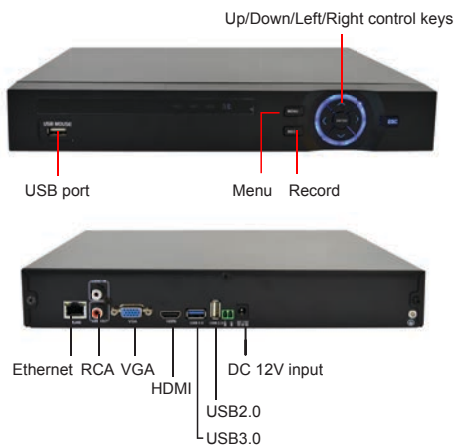


1.

1. Statement:

This operation manual is only for a brief description of the product, for more product information please open the CDROM.

2. Product description:



2.

3. Boot up and System login:

3.1 HDD installation

Before the device boot up, install the HDD. Skip this step if you don't need storage.

3.2 Boot up

Connect the power, the indicator turns on, the NVR boots up.

3.3 Shut down

Go to ([Main menu]->[Logout]->[Shutdown]) or unplug the power.

NOTE: When the NVR is shut down abnormally, reboot it, all recording will be saved automatically. The NVR restores the previous status.

3.4 System login

When NVR boots up, the user must login. Default user name is "admin", while the password field is empty.

NOTE:

Change the password right after first login.

If the password is continuously wrong three times, the alarm will start. If the password is continuously wrong five times, the account will be locked. After half an hour, the account will be unlocked automatically.



4.

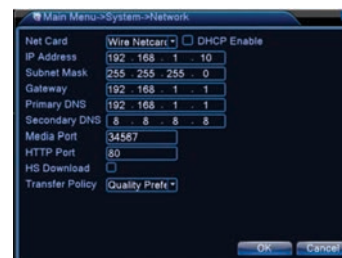
4. Network settings:

Go to [Main menu]->[System]->[Network]:

[IP address]: default 192.168.1.10

[Subnet mask]: default 255.255.255.0

[Gateway]: default 192.168.1.1



Note: IP address of the speed dome must share the same network segment with the router and conform to the router's IP, and make sure the IP is not conflicted in the network of LAN. Go to [Main menu]-> [System]->[Network] select DHCP Enable.

5.

5. Record settings:

NVR must contain HDD.

5.1 HDD management

After installing HDD, boot up the NVR and go to [Main menu] ->[Advanced]->[Storage] to format the HDD. Set the HDD as read-write.

NOTE: At least one read-write HDD is needed for normal recording.

5.2 Video settings

Go to [Main menu]->[Record]->[Record conf.]



6.

[Channel] Choose the corresponding channel number. Choose "ALL" to make all the channels with same configuration [Length] the time length of each video file can be set between 1 min to 120min. 60 minutes is default value.

[Redundancy*] Choose the redundancy function to double backup the file.

*Available only for devices with two HDD.

[Record Control] Set video state: timing, manual or stop. Configuration: Record according to the set video type (common, detection) and time section.

[Manual] Corresponding channel starts recording 24 hours non-stop.

[Stop] Whatever state the channel is in, the corresponding channel recording stops when stop button is selected.

[Period] Set the time section of common recording, The recording will start only among the set range.

[Regular] Record according to the set time section. The video file type is "R".

7.

[Detect] Within the set time section, trigger the motion detect, video blind, video loss or abnormal analysis. When above alarm is set as opening recording, the recording detection state is on. The video file type is M.

6. Playback:

There are two ways for you to play the video files:

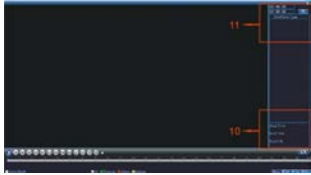
1. Using the shortcut menu
2. Go to [Main menu]->[Record]->[Play Back]

NOTE: The HDD that saves the videos must be set as read-write or read-only state.



8.

1. Playback control
2. Time display
3. Record mode
4. Time schedule selection
5. Time/file selection
6. Search file
7. Channel selection
8. Time selection
9. HDD selection
10. File info
11. File list
12. Search by time



Double click on the video file you want to play.

7. Channel management:

Go to [Main menu]->[System]->[Digital]->[Digital channels] to add IP camera to digital channels.

9.

[Enable] - Settings are active after enabling.

[Channel] - select channel number to add IP camera

[Connection mode] - single connection (can only connect to one monitoring device) or multi-connection that allows to connect to several devices; devices will be displayed one by one, tour interval can be set no less than 10 sec.

[Add] - Click Add, the following interface will be seen:



10.

[Search] - Search and display the IP address within the same LAN, such as IPC, DVR and NVR. Choose one IP address, device name, type, IP address, port and protocol will be entered automatically.

[Protocol] - suport NETTP, ONVIF and All. Default is All.

[Ok] - Click to finish adding, go back to digital channel interface, choose added monitoring device to preview.

8. LAN Access:

Connect to the internet, login to start monitoring via Internet Explorer.

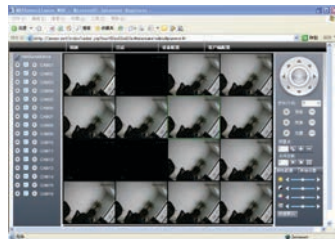
8.1 IE Access

Open web browser, enter IP address, take 192.168.1.10 as an example, input http://192.168.1.10 to connect.

8.2 Enter user name and password (default user name is admin, no password).

11.

Change the administrator password timely after login.



Note: Plug-ins need to be installed if you login via IE browser. IE is default to intercept plug-in.

Please set IE security level. Go to <internet options>--<security>--<Customized level>--<ActiveX >, enable them all. Or go to our official website to download and install plug-ins (<http://www.xmeye.net>); Or get it from the CD and install IE plug-in _V1.1.0.78.exe.

12.

8.3 Mobile access

Network environment: WIFI, 3G

Mobile system: Android, iOS

Software Name: VmEyeCloud

Software Download: Google Market,

App store. Note: if the speed dome can

be visited on public network, it also can

be achieved via VmEyeSuper on public

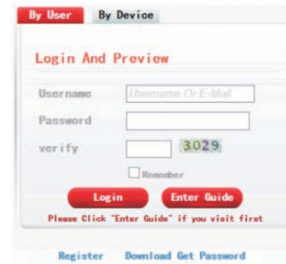
network.

9. Cloud operation:

9.1 PC access

a. Visit <http://xmeye.net>.

Login:

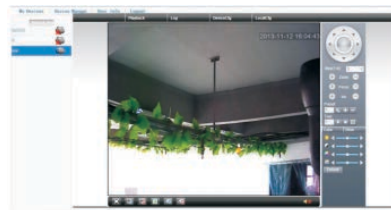


13.

b. Install it step by step according to the guides prompt message.



c. Click "Login" to enter cloud service interface, double-click left camera with alias name to connect to the preview.



14.

d. After successful configuration, wherever and whenever you are, as long as you can surf the Internet, you can get access to the device.

NOTE: When left device name shows with red cross, it means speed dome is not connected with cloud service website.

9.2 Mobile access

Network environment: WIFI, 3G

Mobile system: Android, Apple

Software Name: VmEyeCloud

Software Download: Google Play, AppStore.



15.

10. Technical specifications:

- Video input 16 x 960P
- Video output 1 x VGA / 1 x HDMI (1920x1080)
- Audio input: 1 x RCA
- Audio output: 1 x RCA
- Resolution: PAL 960P (1280 x 960) / 720P (1280 x 720)
- Record mode: Manual / Alarm / Motion detection / Continuous
- 2 x SATA HDD up to 4TB each (HDD is not included)
- 1 x USB2.0 / 1 x USB 3.0
- Suport: iPhone, iPad, BlackBerry, Android, Windows
- Compatible with ONVIF 2.0/2.2 protocol
- Port Ethernet 10 / 100 / 1000 Mbps
- Suport iCloud (P2P) function
- Compatible with: Google Chrome, Internet Explorer, Mozilla Firefox, Safari Browser
- Working temperature: 0°C ~ 55°C

16.