

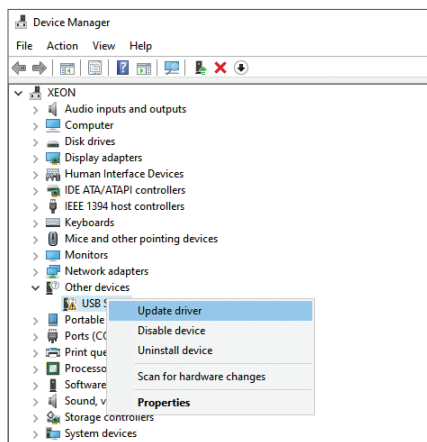
Programming kit PNI PSR230

for the PNI PMR R20, R30, R40 PMR radios

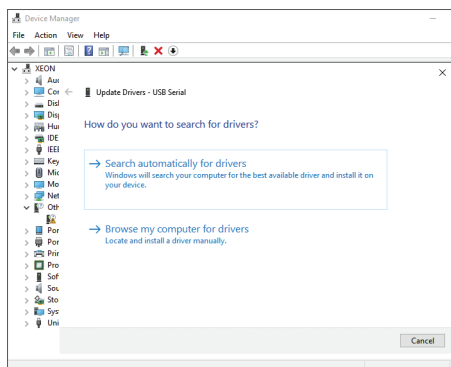
Install the CH340 driver

Install the CH340 driver on your computer by following the instructions below:

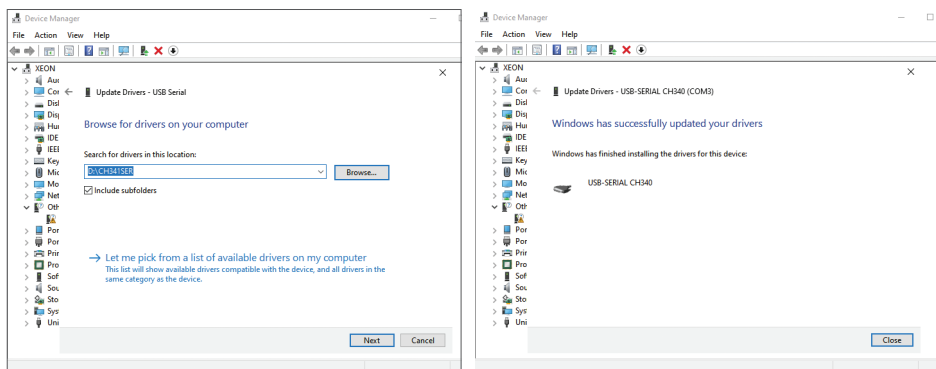
- » Open **Device manager**, right click on your USB cable and select **Update driver**:



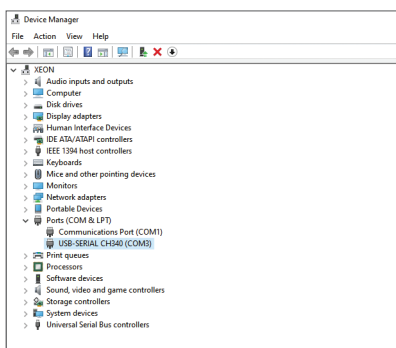
- » Select the option **Browse my computer for drivers**:



- » Open the folder with the **SETUP.EXE** file of the driver and follow the steps on the screen.



- » The driver is now installed and working.



Software installation

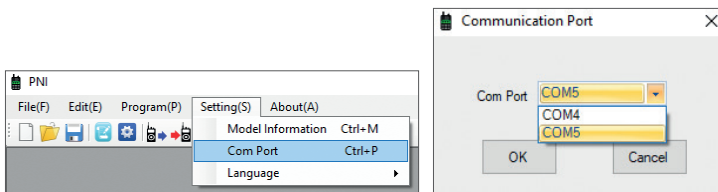
- » Install the programming software by double-clicking the setup.exe file.
- » Using the included cable, connect the PMR radio to the computer's USB port.


Download the programming software:

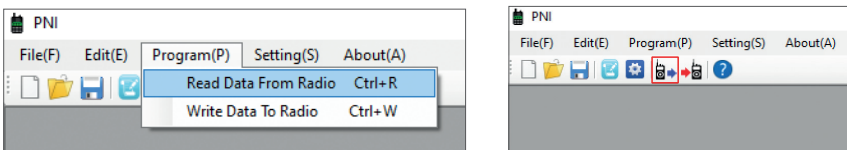




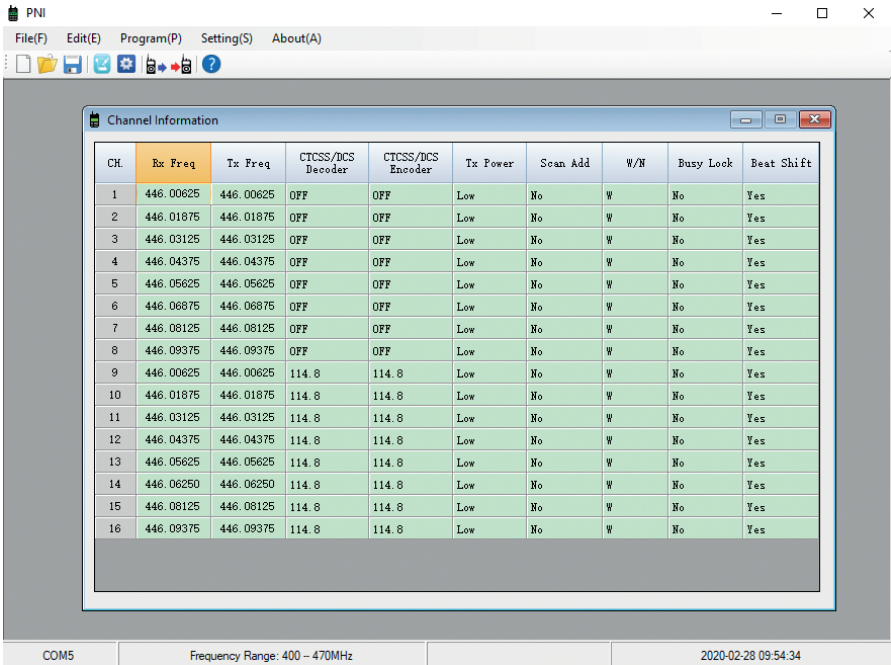
- » Check in **Device manager - Ports (COM & LPT)** the number of the USB port to which you connected the PMR radio (**COM3, COM 4 or COM5**)
- » Open the programming software, access the menu **Settings - Com Port** and select the port where you connected the PMR radio:



- » Read the data from the PMR radio: access the menu **Program - Read data** from radio sau click pe icon  :

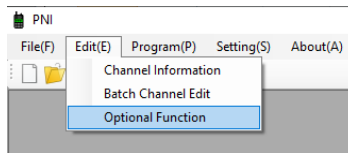


- » Go to the menu **Edit - Channel information**

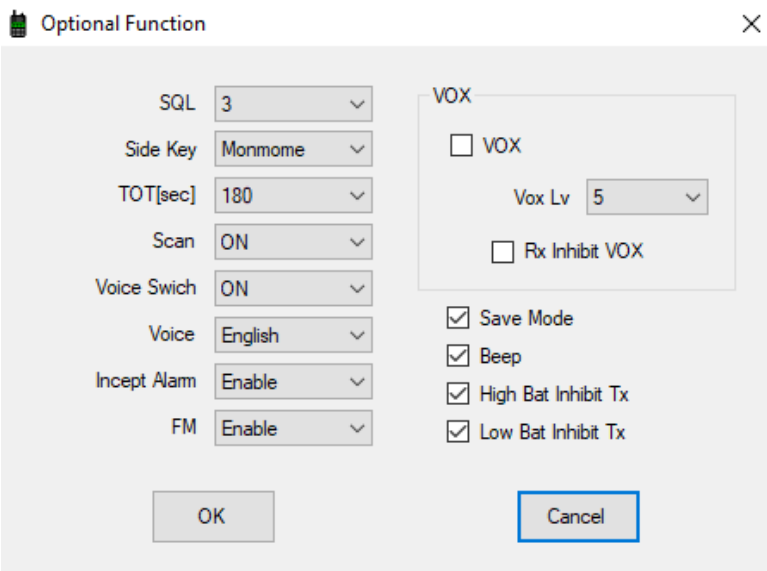


For each channel, set the CTCSS / DCS code or turn it off on both reception and transmission, set the radio's output power (High / Low), or set the Scan function to a specific channel.

» Go to the menu **Edit - Optional Function**



Set the Squelch level, program the side key function, the number of seconds of the TOT function, activate / deactivate the Scan function, activate / deactivate the VOX function and set the sensitivity level:

**Notes:**

- » *Not all software features are available for your radio model. First check the functions of the radio and then access the software for their programming.*
- » *Change the default settings carefully. Incorrect settings, activation or deactivation of some functions, may lead to improper operation of the radio.*

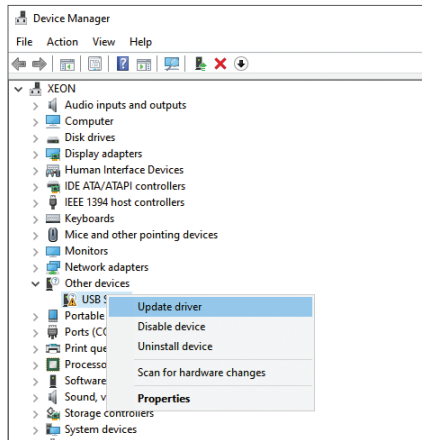
Kit de programare PNI PSR230

pentru statii radio PNI PMR R20, R30, R40

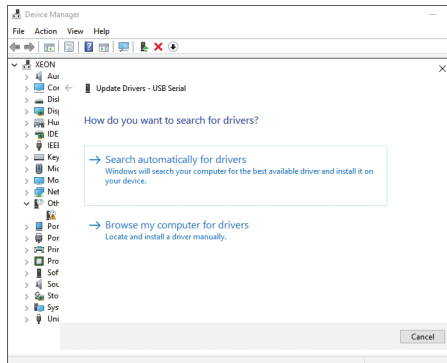
Instalare driver CH340

Instalati in computer driver-ul CH340 urmand instructiunile de mai jos:

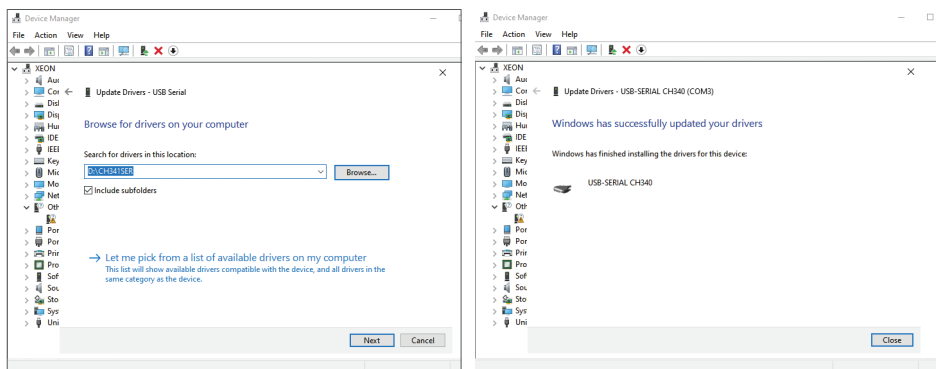
- » Deschideti **Device manager**, faceti click dreapta pe cablul dvs. USB si selectati **Update driver**:



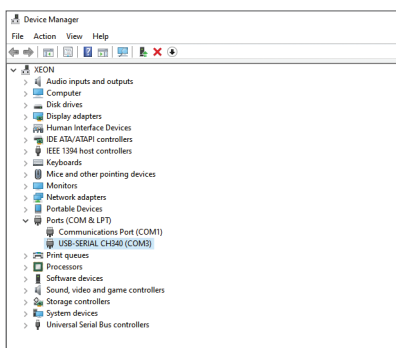
- » Selectati optiunea **Browse my computer for drivers**:



- » Deschideti folderul cu fisierul **SETUP.EXE** al driver-ului si urmati pasii de pe ecran.



- » Acum driver-ul este instalat si functional.



Instalare software

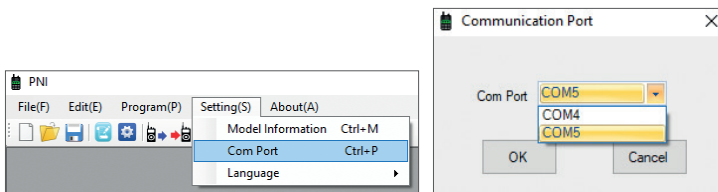
- » Instalati software-ul de programare, facand dublu-click pe fisierul setup.exe
- » Folosind cablul inclus in pachet, conectati statia PMR la portul USB al computerului.


Descarcati software-ul de programare:

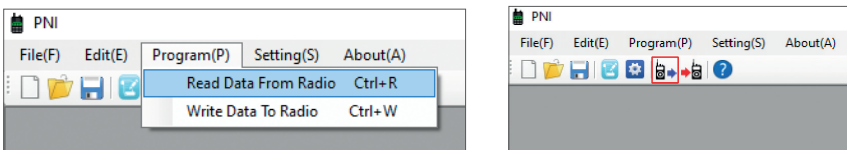




- » Verificati in **Device manager - Ports (COM & LPT)** numarul portului USB la care ati conectat statia PMR (**COM3, COM 4 sau COM5**)
- » Deschideti software-ul de programare, accesati meniul **Settings - Com Port** si selectati portul in care ati conectat statia PMR:



- » Cititi datele din statia PMR: accesati meniul **Program - Read data from radio** sau click pe pictograma  :



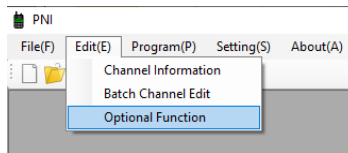
- » Accesati meniul **Edit - Channel information**

CH	Rx Freq	Tx Freq	CTCSS/DCS Decoder	CTCSS/DCS Encoder	Tx Power	Scan Add	W/N	Busy Lock	Beat Shift
1	446.00625	446.00625	OFF	OFF	Low	No	W	No	Yes
2	446.01875	446.01875	OFF	OFF	Low	No	W	No	Yes
3	446.03125	446.03125	OFF	OFF	Low	No	W	No	Yes
4	446.04375	446.04375	OFF	OFF	Low	No	W	No	Yes
5	446.05625	446.05625	OFF	OFF	Low	No	W	No	Yes
6	446.06875	446.06875	OFF	OFF	Low	No	W	No	Yes
7	446.08125	446.08125	OFF	OFF	Low	No	W	No	Yes
8	446.09375	446.09375	OFF	OFF	Low	No	W	No	Yes
9	446.00625	446.00625	114.8	114.8	Low	No	W	No	Yes
10	446.01875	446.01875	114.8	114.8	Low	No	W	No	Yes
11	446.03125	446.03125	114.8	114.8	Low	No	W	No	Yes
12	446.04375	446.04375	114.8	114.8	Low	No	W	No	Yes
13	446.05625	446.05625	114.8	114.8	Low	No	W	No	Yes
14	446.06250	446.06250	114.8	114.8	Low	No	W	No	Yes
15	446.08125	446.08125	114.8	114.8	Low	No	W	No	Yes
16	446.09375	446.09375	114.8	114.8	Low	No	W	No	Yes

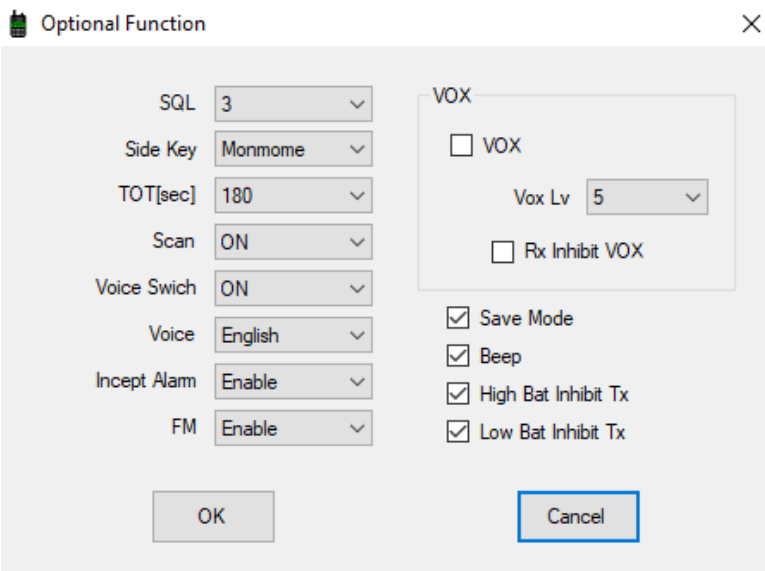
COM5 Frequency Range: 400 - 470MHz 2020-02-28 09:54:34

Pentru fiecare canal in parte, setati codul CTCSS/DCS sau dezactivarea lui atat pe receptie cat si pe emisie, setati puterea de emisie a statiei (High / Low) sau setati functia Scan pe un anumit canal.

» Accesati meniul **Edit - Optional Function**



Setati nivelul Squelch-ului, programati functia tastelor laterale, numarul de secunde al functiei TOT, activati / dezactivati functia Scan, activati/dezactivati functia VOX si setati nivelul de sensibilitate:

**Note:**

- » *Nu toate functiile din software sunt disponibile pentru modelul dvs. de statie. Verificati mai intai functiile statiei si apoi accesati software-ul pentru programarea lor.*
- » *Modificati setarile default cu atentie. Setari incorecte, activarea sau dezactivarea unor functii, pot duce la functionarea necorespunzatoare a statiei.*