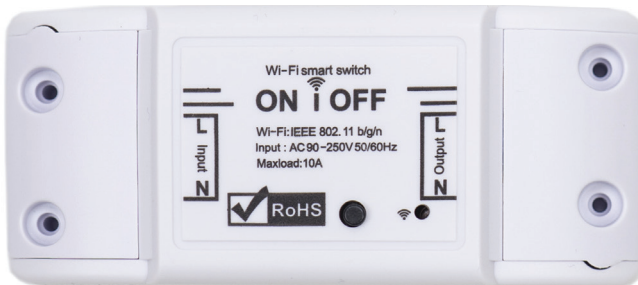




# PNI Safe House PG08

Smart WiFi switch / Интелигентен WiFi превключвател / Smart WiFi-Schalter / Interruptor WiFi inteligente / Commutateur Smart WiFi / Intelligens WiFi kapcsoló / Interruttore WiFi intelligente / Slimme wifi-schakelaar / Inteligentny przełącznik WiFi / Releu inteligent



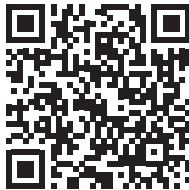
EN	User manual .....	2
BG	Ръководство за употреба .....	4
DE	Benutzerhandbuch .....	6
ES	Manual de usuario .....	8
FR	Manuel utilisateur .....	10
HU	Használati utasítás .....	12
IT	Manuale utente .....	14
NL	Handleiding .....	16
PL	Instrukcja obsługi .....	18
RO	Manual de utilizare .....	20

## SPECIFICATIONS

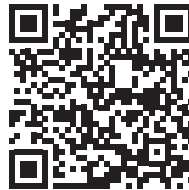
- Power supply: 230V, 50-60 MHz
- Max. load: 10A
- Wifi Standard: IEEE 802.11 b/g/n
- Wireless communication frequency: 433MHz
- Radio transmission power: 10 mW
- Working temperature: -26°C ~ +80°C

## BASIC INSTRUCTIONS

1. Search in Google Play or AppStore for TuyaSmart app or scan the QR code below. After installation, open the application and register.

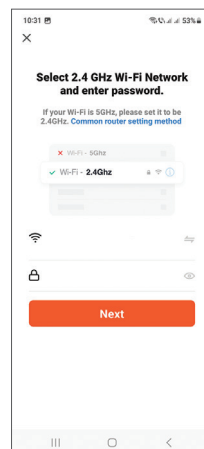
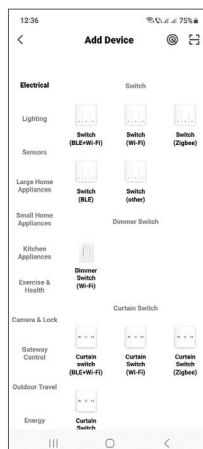
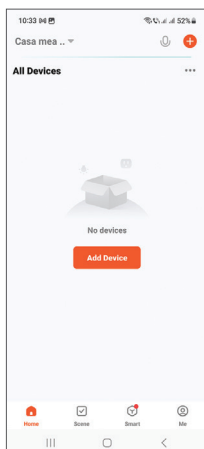


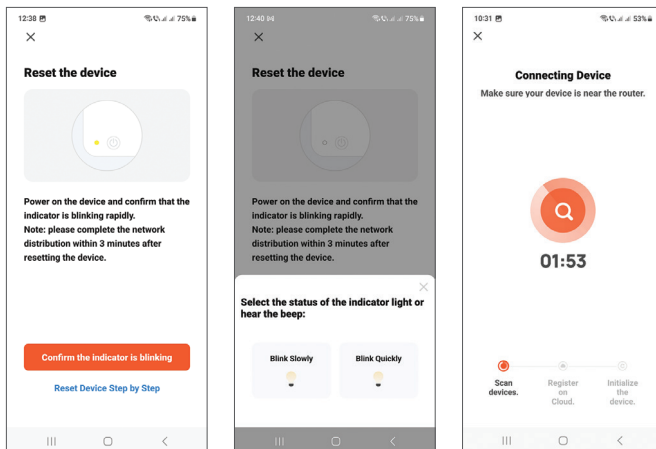
Android



iOS

2. In the main interface of the application, press “Add device” or “+” in the upper right corner
3. From the list of devices, select “Electrical” → “Switch (Wi-Fi)”
4. Select the WiFi network and enter the network password.
5. Press the pairing button on the device.
6. Confirm that the LED indicator blinks quickly.
7. Wait for the relay to connect.

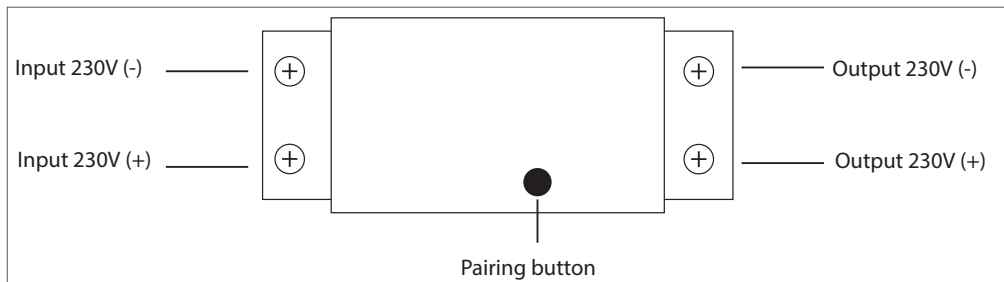




After successfully adding the relay to the application, you can activate it remotely.

Note: Due to the numerous updates of the Tuya Smart application, it is possible that the images and information described in this manual are different from the version you have installed.

## CONNECTION SCHEME



## COMPATIBLE WITH PNI ALARM SYSTEMS

PNI SmartHome PG08 can be integrated with the PNI PG600, PNI HS650 and PNI HS600 wireless alarm systems in an intelligent automation through the dedicated TuyaSmart application. For details on the wireless alarm system, please read the alarm system manual.

## СПЕЦИФИКАЦИИ

- Захранване: 230V, 50-60 MHz
- Макс. натоварване: 10A
- Wi-Fi стандарт: IEEE 802.11 b/g/n
- Честота на безжична комуникация: 433MHz
- Мощност на радиопредаване: 10 mW
- Работна температура: -26°C ~ +80°C

## ОСНОВНИ ИНСТРУКЦИИ

1. Потърсете в Google Play или AppStore приложението TuYaSmart или сканирайте qr кода по -долу. След инсталирането отворете приложението и се регистрирайте.

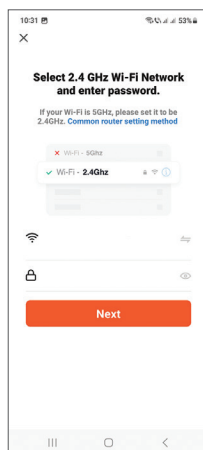
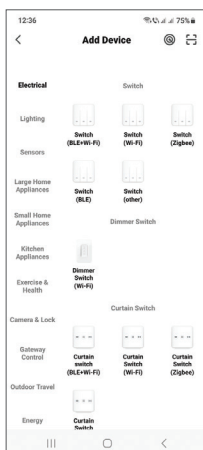
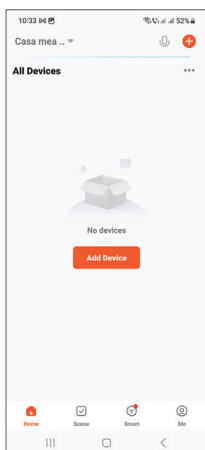


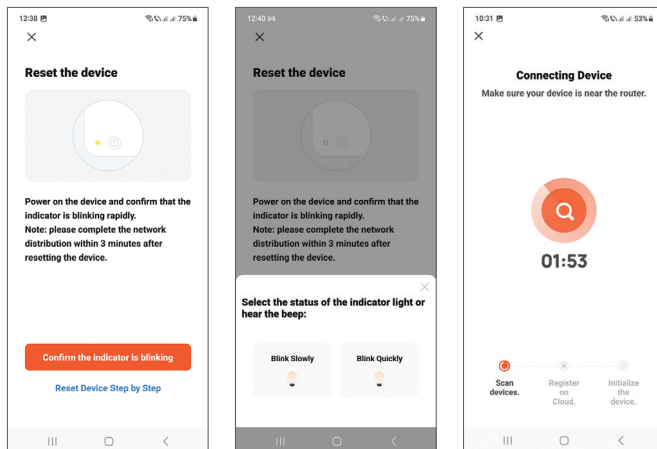
Android



iOS

2. В основния интерфейс на приложението натиснете „Добавяне на устройство“ или „+“ в горния десен ъгъл
3. От списъка с устройства изберете „Electrical“ → „Switch (Wi-Fi)“
4. Изберете WiFi мрежата и въведете паролата за мрежата.
5. Натиснете бутона за сдвояване на устройството.
6. Уверете се, че LED индикаторът мига бързо.
7. Изчакайте релето да се свърже.





След успешно добавяне на релето към приложението, можете да го активирате дистанционно.

Забележка: Поради многобройните актуализации на приложението TuYa Smart е възможно изображенията и информацията, описани в това ръководство, да са различни от версията, която сте инсталирали.

## СХЕМА НА СВЪРЗВАНЕ



## СЪВМЕСТИМ С АЛАРМЕНА СИСТЕМА PNI

PNI SmartHome PG08 може да бъде интегриран с безжичната алармена система PNI PG600, PNI HS650, PNI HS600 в интелигентна автоматизация чрез специалното приложение TuYaSmart.

За подробности относно безжичната алармена система, моля, прочетете ръководството за алармената система.

## spezifikationen

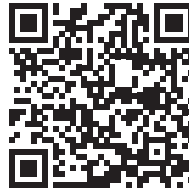
- Spannungsversorgung: 230V, 50-60 MHz
- Unterstützte maximale Last: 10A
- WLAN-Standard: IEEE 802.11 b / g / n
- Drahtlose Kommunikationsfrequenz: 433MHz
- Funksendeleistung: 10 mW
- Arbeitstemperatur: -26°C ~ +80°C

## IGRUNDLEGENDE ANWEISUNGEN

1. Suchen Sie im Google Play AppStore nach TuyaSmart oder scannen Sie den folgenden Code. Öffnen Sie die Anwendung nach der Installation und registrieren Sie sich.

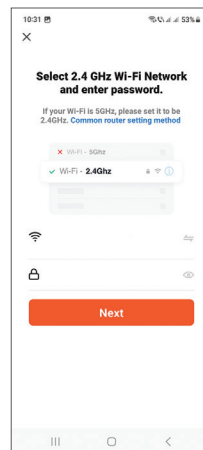
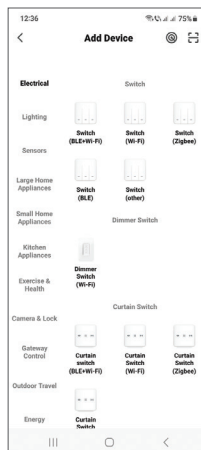
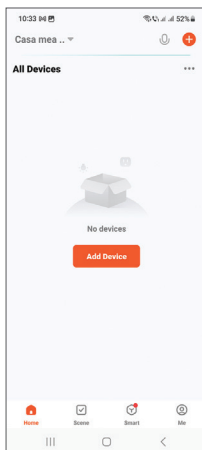


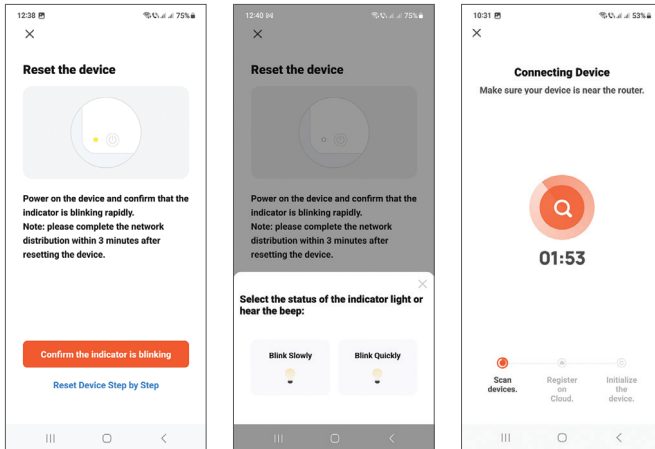
Android



iOS

2. Drücken Sie in der Hauptoberfläche der Anwendung auf “Add device” oder “+” in der oberen rechten Ecke
3. Wählen Sie aus der Geräteliste “Electrical” → “Switch (Wi-Fi)”
4. Wählen Sie das WLAN-Netzwerk aus und geben Sie das Netzwerkpasswort ein.
5. Drücken Sie die Pairing-Taste am Gerät.
6. Vergewissern Sie sich, dass die LED-Anzeige schnell blinkt.
7. Warten Sie, bis sich das Relais verbindet.

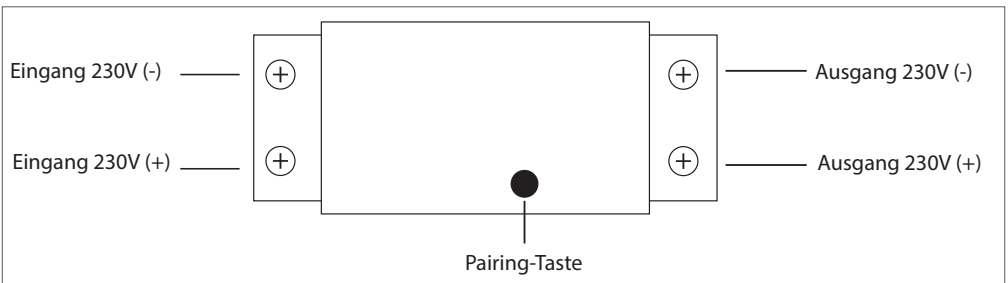




Nachdem Sie das Relais erfolgreich zur Anwendung hinzugefügt haben, können Sie es aus der Ferne aktivieren.

Hinweis: Aufgrund der zahlreichen Aktualisierungen der Tuya Smart-Anwendung ist es möglich, dass die in diesem Handbuch beschriebenen Bilder und Informationen von der von Ihnen installierten Version abweichen.

## VERBINDUNGSSCHEMA



## KOMPATIBEL MIT PNI ALARMSYSTEM

PNI SmartHome PG08 kann mithilfe der speziellen TuyaSmart-Anwendung in das drahtlose Alarmsystem PNI PG600, PNI HS650, PNI HS600 für intelligente Automatisierung integriert werden.

Einzelheiten zum drahtlosen Alarmsystem finden Sie im Handbuch des Alarmsystems.

## ESPECIFICACIONES

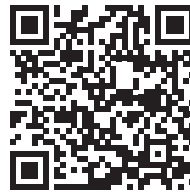
- Fuente de alimentación: 230V, 50-60 MHz
- Carga máxima soportada: 10A
- Estándar Wifi: IEEE 802.11 b / g / n
- Frecuencia de comunicación inalámbrica: 433 MHz
- Potencia de transmisión de radio: 10 mW
- Temperatura de trabajo: -26°C ~ +80°C

## INSTRUCCIONES BASICAS

1. En Google Play o AppStore busque TuyaSmart o escanee el código a continuación. Abra la aplicación después de la instalación y regístrese.

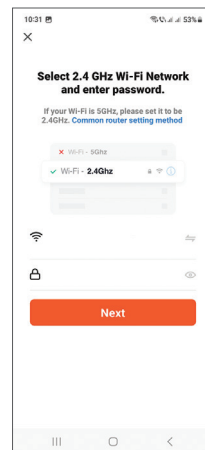
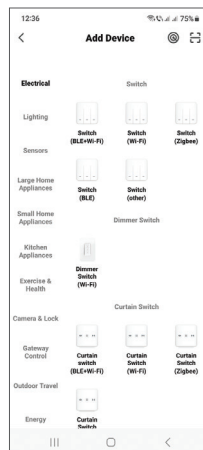
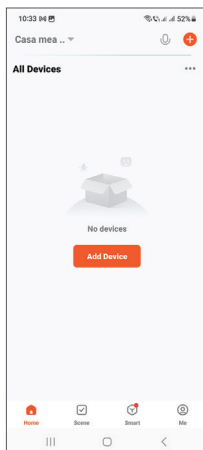


Android

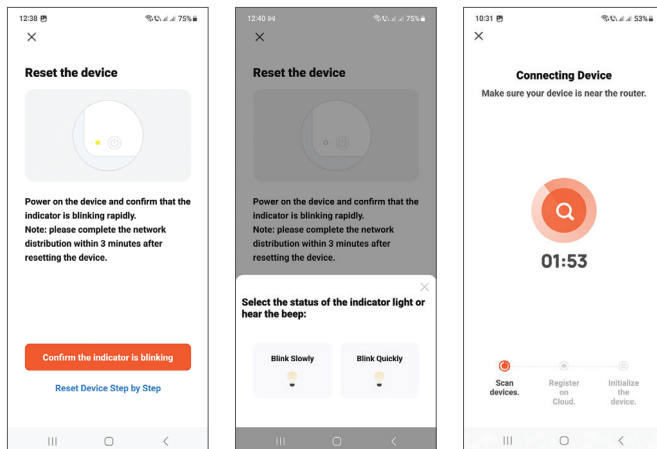


iOS

2. En la interfaz principal de la aplicación, presione “Add device” o “+” en la esquina superior derecha
3. De la lista de dispositivos, seleccione “Electrical” → “Switch (Wi-Fi)”
4. Seleccione la red WiFi e ingrese la contraseña de la red.
5. Presione el botón de emparejamiento en el dispositivo.
6. Confirme que el indicador LED parpadea rápidamente.
7. Espere a que el relé se conecte.



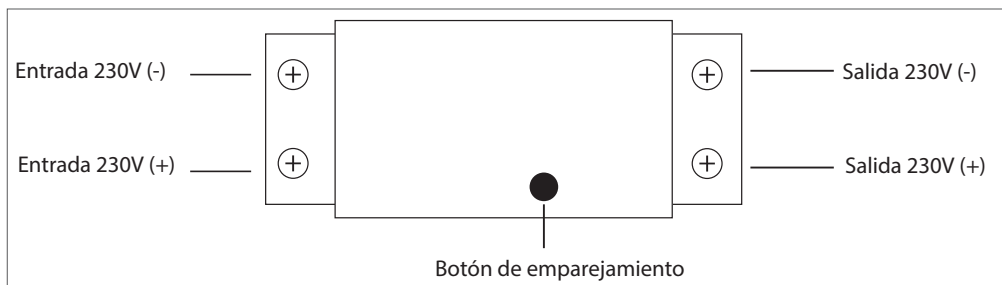




Después de agregar con éxito el relé a la aplicación, puede activarlo de forma remota.

Nota: Debido a las numerosas actualizaciones de la aplicación Tuya Smart, es posible que las imágenes y la información descritas en este manual sean diferentes a la versión que tienes instalada.

## ESQUEMA DE CONEXIÓN



## COMPATIBLE CON EL SISTEMA DE ALARMA PNI

PNI SmartHome PG08 se puede integrar con el sistema de alarma inalámbrico PNI PG600, PNI HS650, PNI HS600 en automatización inteligente a través de la aplicación dedicada TuyaSmart. Para obtener detalles sobre el sistema de alarma inalámbrico, lea el manual del sistema de alarma.

## CARACTÉRISTIQUES

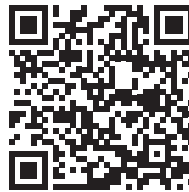
- Alimentation: 230V, 50-60 MHz
- Charge maximale supportée: 10A
- Norme Wifi: IEEE 802.11 b / g / n
- Fréquence de communication sans fil : 433MHz
- Puissance d'émission radio : 10 mW
- Température de travail: -26°C ~ +80°C

## INSTRUCTIONS DE BASE

1. Dans Google Play ou AppStore, recherchez TuyaSmart ou scannez le code ci-dessous. Ouvrez l'application après l'installation et enregistrez-vous.

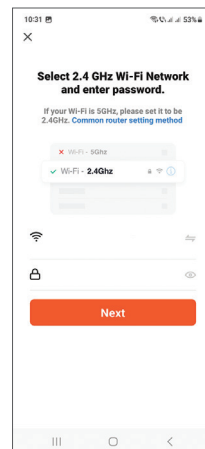
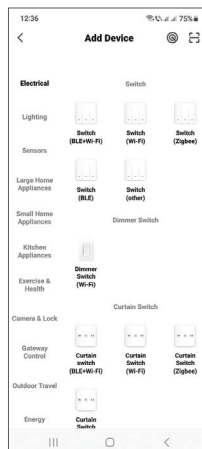
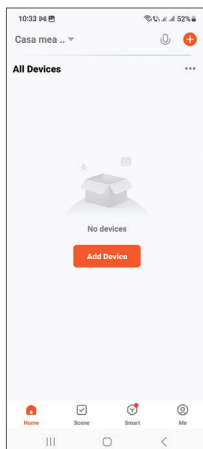


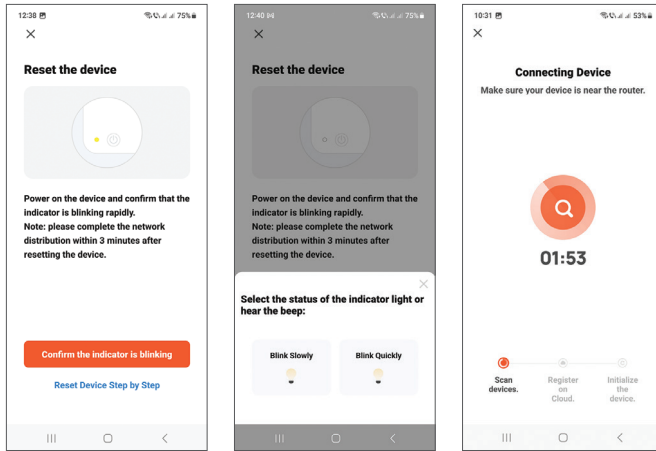
Android



iOS

2. Dans l'interface principale de l'application, appuyez sur "Add device" ou "+" dans le coin supérieur droit.
3. Dans la liste des périphériques, sélectionnez "Electrical" → "Sensor (Wi-Fi)".
4. Sélectionnez le réseau Wi-Fi et saisissez le mot de passe du réseau.
5. Appuyez sur le bouton d'appairage de l'appareil.
6. Vérifiez que le voyant LED clignote rapidement.
7. Attendez que le relais se connecte.

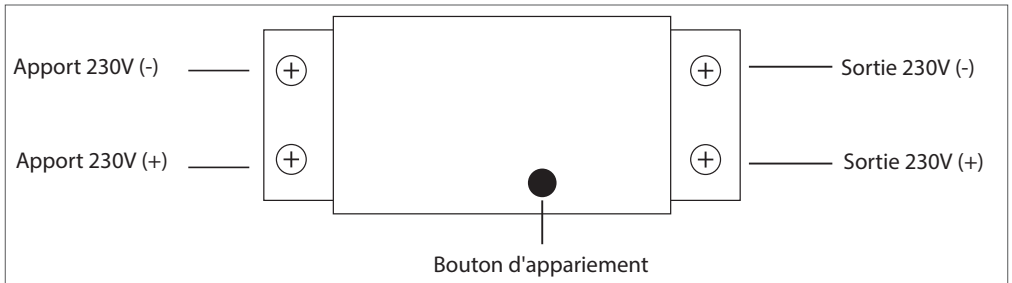




Après avoir ajouté avec succès le relais à l'application, vous pouvez l'activer à distance.

Remarque : En raison des nombreuses mises à jour de l'application Tuya Smart, il est possible que les images et les informations décrites dans ce manuel soient différentes de la version que vous avez installée.

## SCHEMA DE CONNEXION



## COMPATIBLE AVEC LE SYSTÈME D'ALARME PNI

PNI SmartHome PG08 peut être intégrée au système d'alarme sans fil PNI PG600, PNI HS650, PNI HS600 dans une automatisation intelligente via l'application dédiée TuyaSmart. Pour plus de détails sur le système d'alarme sans fil, veuillez consulter le manuel du système d'alarme.

## LEÍRÁSOK

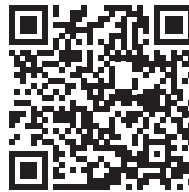
- Tápegység: 230 V, 50-60 MHz
- Támogatott maximális terhelés: 10A
- Wifi szabvány: IEEE 802.11 b / g / n
- Vezeték nélküli kommunikációs frekvencia: 433 MHz
- Rádió átviteli teljesítmény: 10 mW
- Üzemi hőmérséklet: -26°C ~ +80°C

## ALAPVETŐ UTASÍTÁSOK

1. A Google Play vagy az AppStore alkalmazásban keressen TuyaSmart-ra, vagy olvassa be az alábbi kódot. Telepítés után nyissa meg az alkalmazást, és regisztráljon.

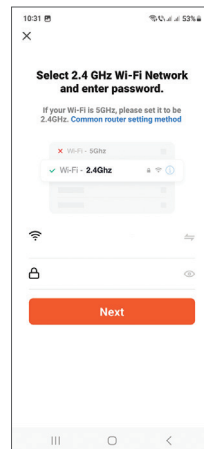
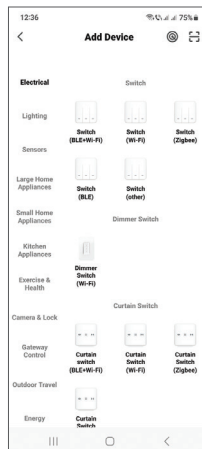
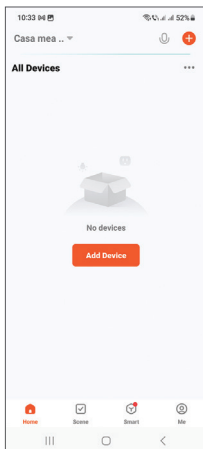


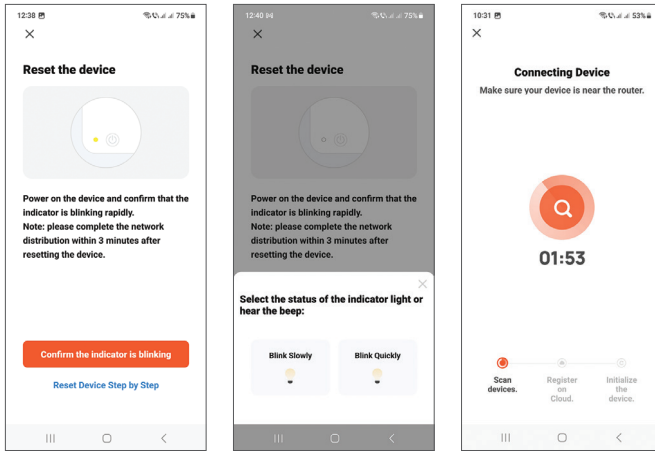
Android



iOS

2. Az alkalmazás fő felületén nyomja meg a jobb felső sarokban lévő "Add device" vagy a "+" gombot
3. Az eszközök listájából válassza a "Electrical" → "Switch (Wi-Fi)" lehetőséget.
4. Válassza ki a WiFi hálózatot, és adja meg a hálózati jelszót.
5. Nyomja meg a párosítás gombot a készüléken.
6. Győződjön meg arról, hogy a LED jelzőfény gyorsan villog.
7. Várja meg, amíg a relé csatlakozik.

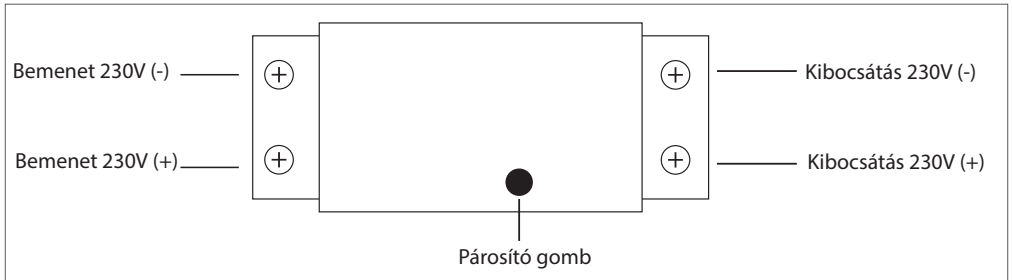




Miután sikeresen hozzáadta a relét az alkalmazáshoz, távolról aktiválhatja.

Megjegyzés: A Tuya Smart alkalmazás számos frissítése miatt előfordulhat, hogy a kézikönyvben leírt képek és információk eltérnek az Ön által telepített verziótól.

## CSATLAKOZÁSI SÉMA



## KOMPATIBILIS A PNI RIASZTÓRENDSZERREL

PNI SmartHome PG08 integrálható a PNI PG600, PNI HS650, PNI HS600 vezeték nélküli riasztórendszerrel, intelligens automatizálás révén a dedikált TuyaSmart alkalmazáson keresztül. A PNI vezeték nélküli riasztórendszerrel kapcsolatos részleteket, kérjük, olvassa el a riasztórendszer kézikönyvét.

## SPECIFICHE TECNICHE

- Alimentazione: 230 V, 50-60 MHz
- Carico massimo supportato: 10A
- Wifi standard: IEEE 802.11 b / g / n
- Frequenza di comunicazione wireless: 433 MHz
- Potenza di trasmissione radio: 10 mW
- Temperatura di lavoro: -26°C ~ +80°C

## ISTRUZIONI DI BASE

1. Cercare TuyaSmart su Google Play o AppStore o scansionare il codice qui sotto. Aprire l'applicazione dopo l'installazione e registrarsi.

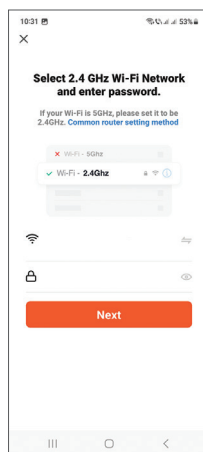
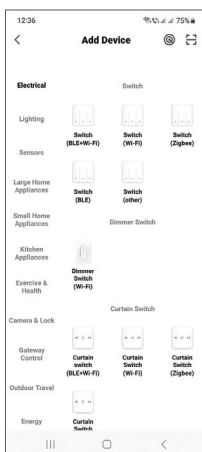
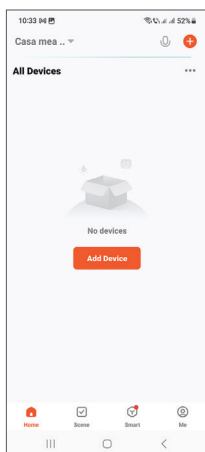


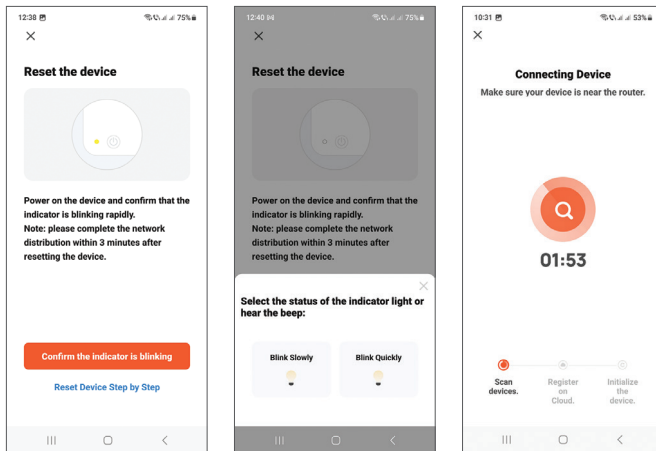
Android



iOS

2. Nell'interfaccia principale dell'applicazione, premere "Add device" o "+" nell'angolo in alto a destra
3. Dall'elenco dei dispositivi, selezionare "Electrical" → "Switch (Wi-Fi)"
4. Seleziona la rete Wi-Fi e inserisci la password di rete.
5. Premere il pulsante di associazione sul dispositivo.
6. Verificare che l'indicatore LED lampeggi rapidamente.
7. Attendere che il relè si connetta.

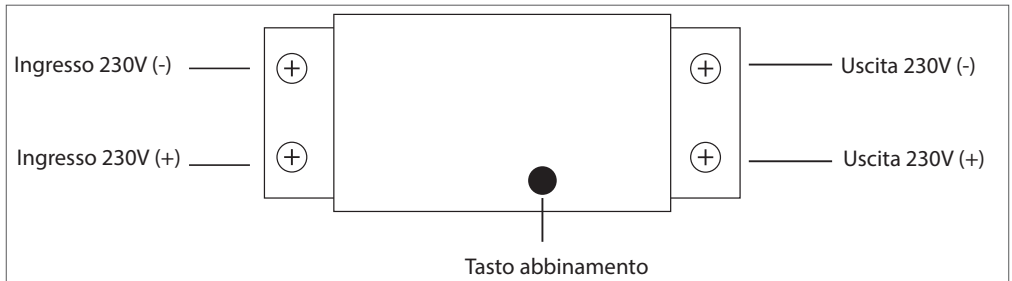




Dopo aver aggiunto correttamente il relè all'applicazione, è possibile attivarlo da remoto.

Nota: a causa dei numerosi aggiornamenti dell'applicazione Tuya Smart, è possibile che le immagini e le informazioni descritte in questo manuale siano diverse dalla versione installata.

## SCHEMA CONNESSIONI



## COMPATIBILE CON IL SISTEMA DI ALLARME PNI

PNI SmartHome PG08 può essere integrata insieme al sistema di allarme wireless PNI PG600, PNI HS650, PNI HS600 in un'automazione intelligente attraverso l'applicazione dedicata TuyaSmart. Per i dettagli sul sistema di allarme wireless, leggere il manuale del sistema di allarme.

## SPECIFICATIES:

- Voeding: 230V, 50-60 MHz
- Maximaal belasting: 10A
- Wifi-standaard: IEEE 802.11 b/g/n
- Draadloze communicatiefrequentie: 433MHz
- Radiozendvermogen: 10 mW
- Werktemperatuur: -26°C ~ +80°C

## BASIS INSTRUCTIES

1. Zoek in Google Play of AppStore naar de TuyaSmart-app of scan de onderstaande qr-code. Open na de installatie de applicatie en registreer.

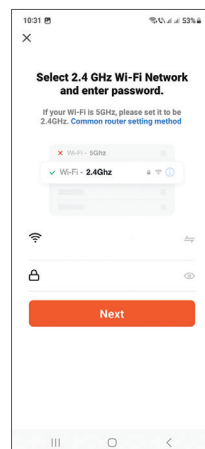
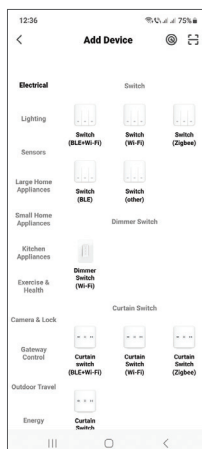
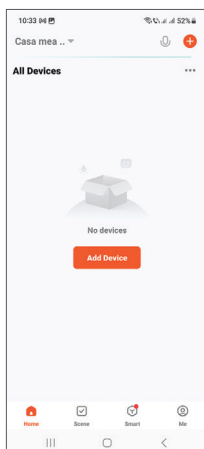


Android

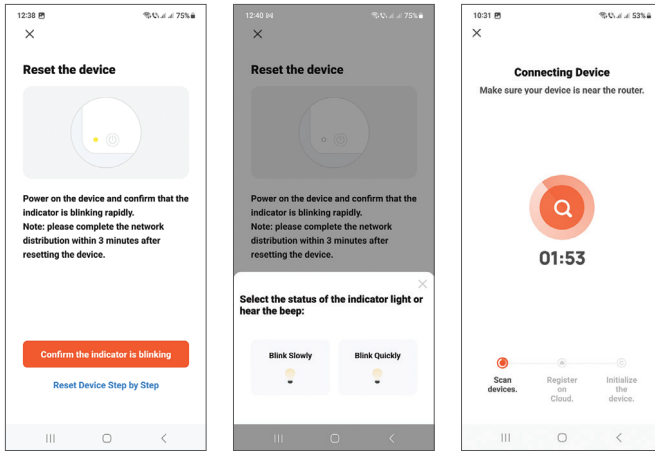


iOS

2. Druk in de hoofdinterface van de applicatie op “Apparaat toevoegen” of “+” in de rechterbovenhoek
3. Selecteer in de lijst met apparaten “Electrical” → “Switch (Wi-Fi)”
4. Selecteer het wifi-netwerk en voer het netwerk wachtwoord in.
5. Druk op de koppelingsknop op het apparaat.
6. Controleer of de LED-indicator snel knippert.
7. Wacht tot het relais verbinding maakt.



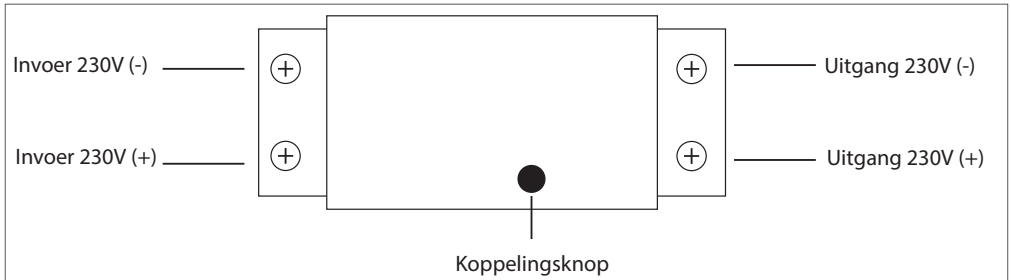




Nadat u het relais met succes aan de toepassing hebt toegevoegd, kunt u het op afstand activeren.

Let op: Door de vele updates van de Tuya Smart applicatie is het mogelijk dat de afbeeldingen en informatie beschreven in deze handleiding afwijken van de versie die u heeft geïnstalleerd.

## AANSLUITSCHEMA



## COMPATIBEL MET PNI ALARMSYSTEEM

PNI SmartHome PG08 kan worden geïntegreerd met het PNI PG600, PNI HS650, PNI HS600 draadloze alarmsysteem in een intelligente automatisering via de speciale TuyaSmart-applicatie. Lees voor meer informatie over het draadloos alarmsysteem de handleiding van het alarmsysteem.

## SPECYFIKACJE

- Zasilanie: 230 V, 50–60 MHz
- Maksymalne obsługiwane obciążenie: 10A
- Standard Wi-Fi: IEEE 802.11 b / g / n
- Częstotliwość komunikacji bezprzewodowej: 433 MHz
- Moc transmisji radiowej: 10 mW
- Temperatura pracy: -26°C ~ +80°C

## PODSTAWOWE INSTRUKCJE

1. W Google Play lub AppStore wyszukaj TuyaSmart lub zeskanuj poniższy kod. Otwórz aplikację po instalacji i zarejestruj się.

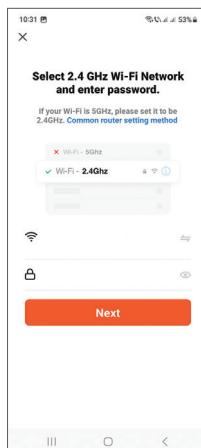
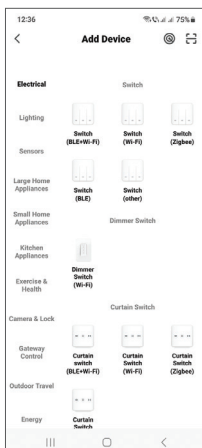
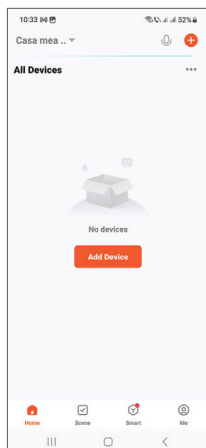


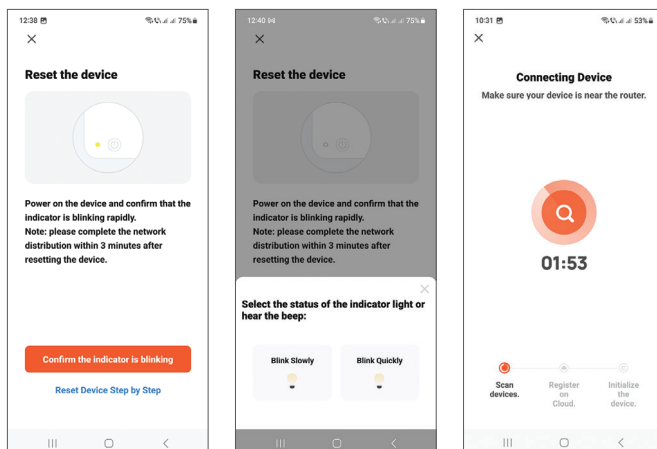
Android



iOS

2. W głównym interfejsie aplikacji naciśnij „Add device” lub „+” w prawym górnym rogu
3. Z listy urządzeń wybierz „Electrical” → „Switch (Wi-Fi)”
4. Wybierz sieć Wi-Fi i wprowadź hasło sieciowe.
5. Naciśnij przycisk parowania na urządzeniu.
6. Sprawdź, czy wskaźnik LED szybko miga.
7. Poczekaj na połączenie przekaźnika.

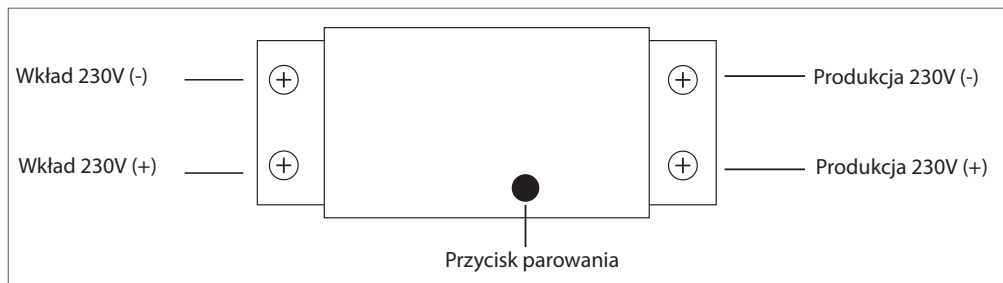




Po pomyślnym dodaniu przekaźnika do aplikacji można go zdalnie aktywować.

Uwaga: Ze względu na liczne aktualizacje aplikacji Tuya Smart możliwe jest, że obrazy i informacje opisane w tej instrukcji różnią się od wersji, którą zainstalowałeś.

## SCHEMAT POŁĄCZEŃ



## KOMPATYBILNY Z SYSTEMEM ALARMOWYM PNI

PNI SmartHome PG08 można zintegrować z bezprzewodowym systemem alarmowym PNI PG600, PNI HS650, PNI HS600 w inteligentnej automatyzacji za pomocą dedykowanej aplikacji TuyaSmart.

Szczegółowe informacje na temat bezprzewodowego systemu alarmowego znajdują się w instrukcji systemu alarmowego.

## SPECIFICATII

- Alimentare: 230V, 50/60 MHz
- Sarcina maxima suportata: 10A
- Standard Wifi: IEEE 802.11 b/g/n
- Frecventa de comunicare wireless: 433MHz
- Putere transmisie radio: 10 mW
- Temperatura de lucru: -26°C ~ +80°C

## INSTRUCTIUNI DE BAZA

1. Cautati in Google Play sau AppStore aplicatia **TuyaSmart** sau scanati codul de mai jos. Deschideti aplicatia dupa instalare si inregistrati-va.

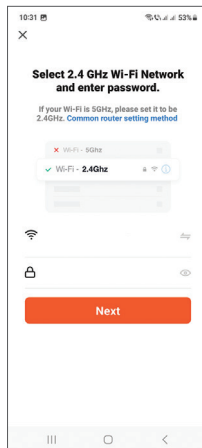
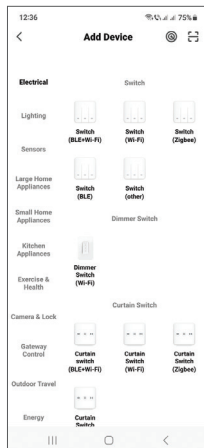
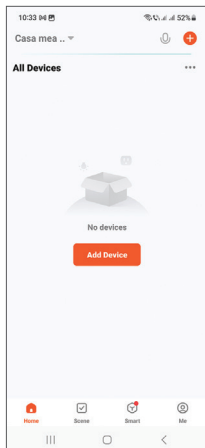


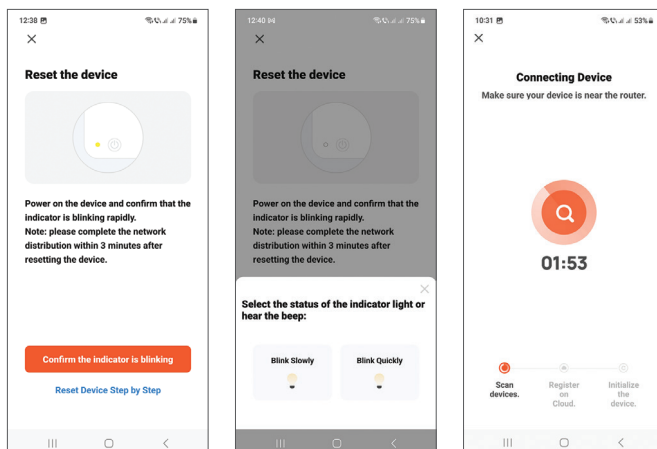
Android



iOS

2. In interfata principala a aplicatiei, apasati "Add device" sau "+" in coltul din dreapta sus.
3. Din lista de dispozitive, selectati "Electrical" → "Switch (Wi-Fi)".
4. Selectati reseaua WiFi si introduceti parola retelei.
5. Apasati butonul de imperechere de pe dispozitiv.
6. Confirmati ca indicatorul LED clipeste des.
7. Asteptati ca releul sa se conecteze.

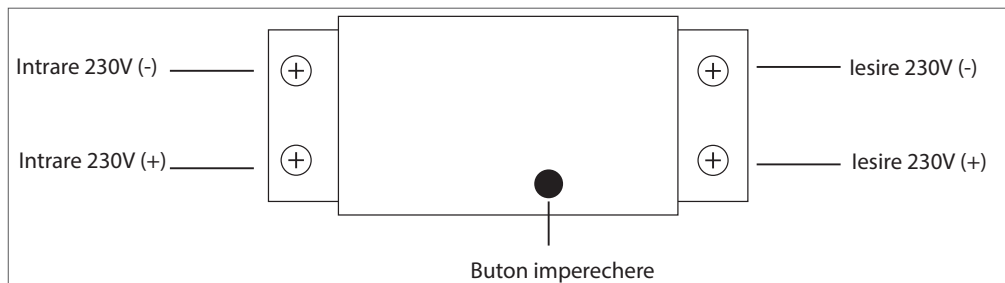




Dupa adaugarea cu succes a releului in aplicatie, il puteti actiona de la distanta.

**Nota:** Datorita numeroaselor update-uri ale aplicatiei Tuya Smart este posibil ca imaginile si informatiile descrise in acest manual sa fie diferite de versiunea pe care ati instalat-o.

## SCHEMA DE CONEXIUNI



## COMPATIBILITATE

Prin aplicatia TuyaSmart, PNI SmartHome PG08 poate fi integrat intr-o automatizare inteligenta impreuna cu sistemul de alarma wireless PNI PG600, PNI HS650 sau PNI HS600.

Pentru detalii privind sistemul de alarma wireless, va rugam sa cititi manualul sistemului de alarma.

**EN:****EU Simplified Declaration of Conformity**

SC ONLINESHOP SRL declares that **Smart WiFi switch PNI Safe House PG08** complies with the Directive RED 2014/53/UE. The full text of the EU declaration of conformity is available at the following Internet address:

<https://www.mypni.eu/products/6722/download/certifications>

**DE:****Vereinfachte EU- Konformitätserklärung**

SC ONLINESHOP SRL erklärt, dass das **Smart WiFi-Schalter PNI Safe House PG08** der Richtlinie RED 2014/53/UE entspricht. Sie finden den ganzen Text der EU-Konformitätserklärung an der folgenden Internetadresse:

<https://www.mypni.eu/products/6722/download/certifications>

**ES:****Declaración UE de conformidad simplificada**

SC ONLINESHOP SRL declara que el **Sinterruptor WiFi inteligente PNI Safe House PG08** cumple con la Directiva RED 2014/53/UE. El texto completo de la declaración de conformidad de la UE está disponible en la siguiente dirección de Internet:

<https://www.mypni.eu/products/6722/download/certifications>

**FR****Déclaration de conformité simplifiée de l'UE**

SC ONLINESHOP SRL déclare que **Commutateur Smart WiFi PNI Safe House PG08** est conforme à la directive RED 2014/53/UE. Le texte complet de la déclaration de conformité UE est disponible à l'adresse Internet suivante:

<https://www.mypni.eu/products/6722/download/certifications>

**HU:****Egyszerűsített EU Megfelelési Közlemény**

SC ONLINESHOP SRL kijelenti azt, hogy a **Intelligens WiFi kapcsoló PNI Safe House PG08** megfelel az RED 2014/53/UE irányelvnek. Az EU-megfeleléségi nyilatkozat teljes szövege a következő internetes címen érhető el:

<https://www.mypni.eu/products/6722/download/certifications>

**IT:****Dichiarazione UE di conformità semplificata**

SC ONLINESHOP SRL dichiara che il **Interruttore WiFi intelligente PNI Safe House PG08** è conforme alla direttiva RED 2014/53/UE. Il testo completo della dichiarazione di conformità europea è disponibile al seguente indirizzo Internet:

<https://www.mypni.eu/products/6722/download/certifications>

**PL:****Uproszczona deklaracja zgodności UE**

SC ONLINESHOP SRL oświadcza, że **Inteligentny przełącznik WiFi PNI Safe House PG08** jest zgodny z dyrektywą RED 2014/53/UE. Pełny tekst deklaracji zgodności UE dostępny jest pod następującym adresem internetowym:

<https://www.mypni.eu/products/6722/download/certifications>

**RO:****Declaratie UE de conformitate simplificata**

SC ONLINESHOP SRL declara ca **Releu inteligent PNI Safe House PG08** este in conformitate cu Directiva RED 2014/53/UE. Textul integral al declaratiei UE de conformitate este disponibil la urmatoarea adresa de internet:

<https://www.mypni.eu/products/6722/download/certifications>



