



PNI SafeHome PT180LV

Smart relay / Releu inteligent

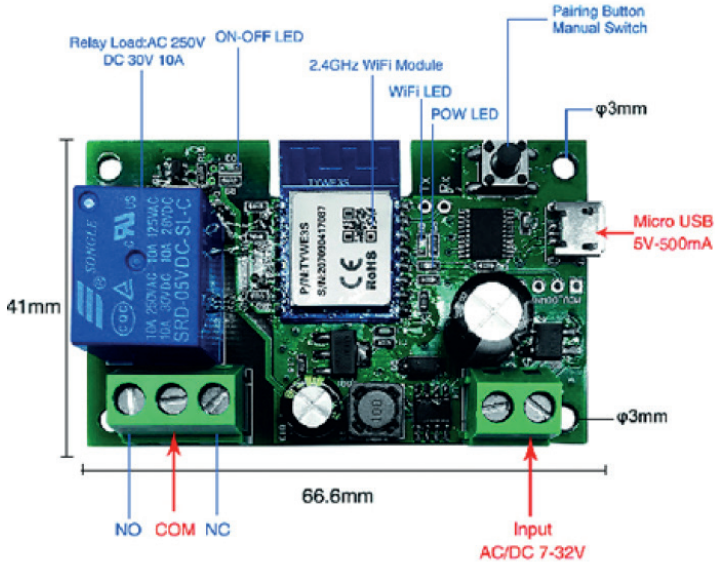


EN	User manual	2
RO	Manual de utilizare	5

Technical specifications

- Rated voltage: 7-32V or 5V (by micro USB)
- Rated current: max. 10A
- Frequency AC: 50-60Hz
- USB power adapter: output >1A

Product description



Note: Before installing the relay, disconnect the general power supply.

Tuya Smart APP

Download the **Tuya Smart app** by accessing Google Play or the App Store or scan the QR codes below:



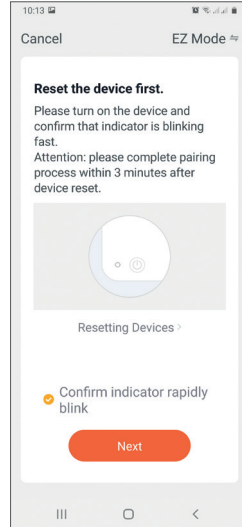
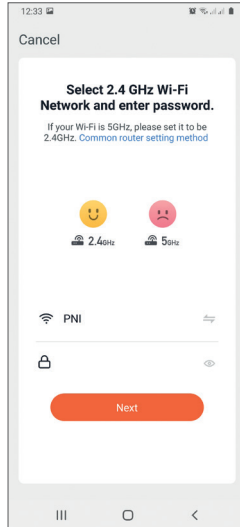
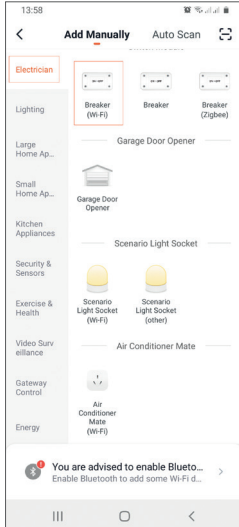
Android

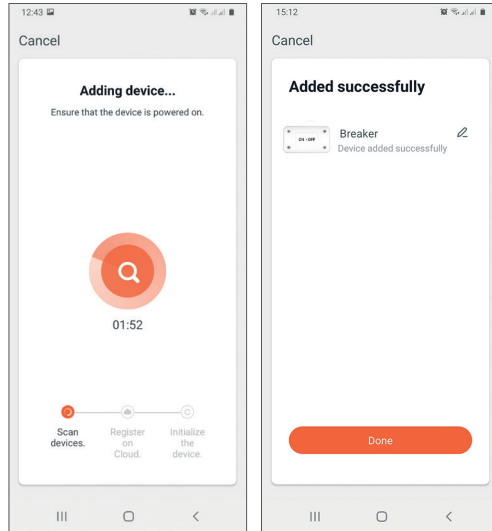


iOS

Add device in Tuya Smart APP

1. Open the application, create an account and log in.
2. Add your device by clicking the **+** icon in the upper right corner of the screen or by clicking the **Add device** button (this button only appears when you do not have any devices added to the application).
3. Select the **Electrician** option on the left side of the screen.
4. From the list of devices on the right side of the screen, select **Breaker (Wi-Fi)**.
5. Select the WiFi network you want to connect to and add the password.
6. In the next interface, in the upper right corner, select the **EZ Mode** option.
7. Reset the relay by long pressing the pairing button. The device is now in pairing mode.
8. Check the **Confirm indicator rapidly blinks** option and click **Next**.
9. The application will scan nearby devices. After identifying your device, you will receive the **Added successfully** confirmation.
10. To finish, click the **Done** button.





Device control in the application

The Tuya Smart application allows remote control of the relay.

Options:

- On/Off
- Timer
- Countdown

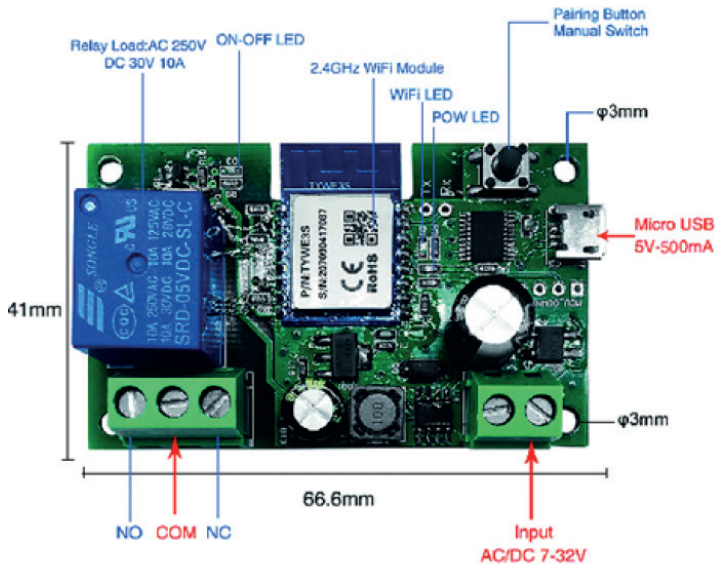
Safety warnings

- Make sure that the total power of the connected electrical devices does not exceed the maximum power supported by the relay (2200W for 230V).
- The installation of the relay must be done only by specialized electricians respecting the local norms.
- Take all safety precautions when installing the relay.
- Protect the relay from moisture and excessive heat. Risk of short circuit.
- Install the relay away from sources of interference (eg microwave oven) that could affect its operation.
- Do not attempt to repair the relay by yourself.

Specificatii tehnice

- Tensiune nominala: 90-250V AC
- Curent nominal: max. 10A
- Frecventa AC: 50-60Hz
- Adaptor USB: iesire >1A

Descriere produs



Nota: Inainte de a instala releul, intrerupeti alimentarea generala de curent.

Aplicatia Tuya Smart

Descarcati aplicatia **Tuya Smart** accesand Google Play sau App Store sau scanati codurile QR de mai jos:




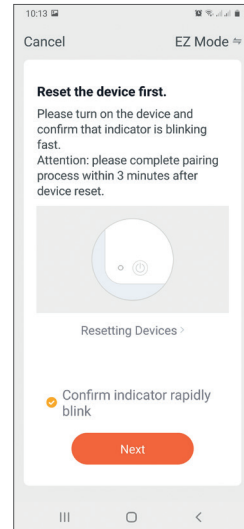
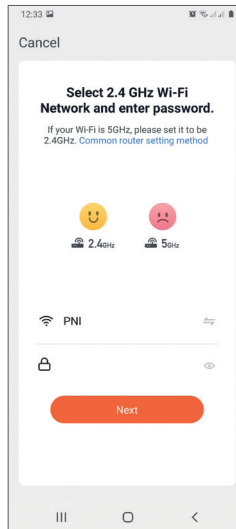
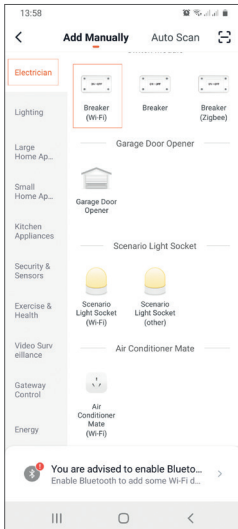
Android

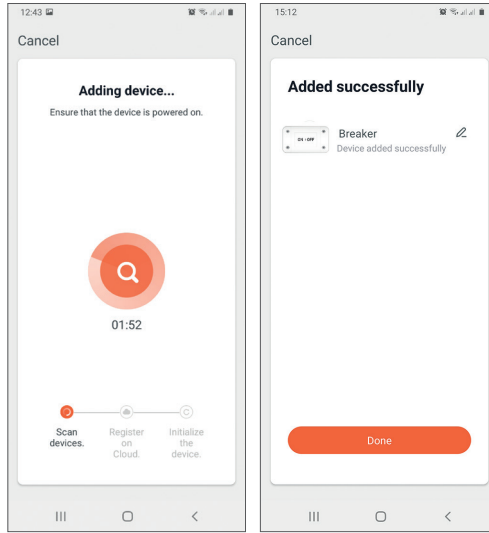


iOS

Adaugare dispozitiv in aplicatia Tuya Smart

1. Deschideti aplicatia, creati-va cont si autentificati-va.
2. Adaugati dispozitivul dvs. apasand pictograma + din coltul dreapta sus al ecranului sau apasand butonul **Add device** (acest buton apare doar atunci cand nu aveti nici un dispozitiv adaugat in aplicatie).
3. Selectati din partea stanga a ecranului optiunea **Electrician**.
4. Din lista de dispozitive din partea dreapta a ecranului, selectati **Breaker (Wi-Fi)** 
5. Selectati reseaua WiFi la care doriti sa va conectati si adaugati parola.
6. In interfața urmatoare, din coltul dreapta sus, selectati optiunea **EZ Mode**.
7. Resetati releul apasand lung butonul de imperechere. Acum dispozitivul se afla in modul de imperechere.
8. Bifati optiunea **Confirm indicator rapidly blinks** si faceti click pe **Next**.
9. Aplicatia va scana dispozitivele din apropiere. Dupa ce va identifica dispozitivul dvs., veti primi confirmarea **Added successfully**.
10. Pentru a finaliza, faceti click pe butonul **Done**.





Control dispozitiv din aplicatie

Aplicatia Tuya Smart permite controlul de la distanta al releului.

Optiuni:

- Pornire/Oprire (On/Off)
- Programare orara (Timer)
- Cronometru (Countdown)

Atentionari de siguranta

- Asigurati-va ca puterea totala a dispozitivelor electrice conectate nu depaseste puterea maxima suportata de releu (2200W pentru 230V).
- Instalarea releului trebuie facuta doar de electricienii specializati respectand normele locale.
- Luati toate masurile de siguranta cand instalati releul.
- Feriti releul de umiditate si caldura excesiva. Risc de scurcircuit.
- Instalati releul la distanta de surse de interferente (de ex. cuptorul cu microunde) care ar putea afecta modul de functionare al acestuia.
- Nu desfaceti si nu incercati sa reparati singur releul.

EN:

EU Simplified Declaration of Conformity

SC ONLINESHOP SRL declares that **Smart relay PNI SafeHome PT180LV** complies with the Directive EMC 2014/30/EU and RED 2014/53/UE. The full text of the EU declaration of conformity is available at the following Internet address:

<https://www.mypni.eu/products/7242/download/certifications>

RO:

Declaratie UE de conformitate simplificata

SC ONLINESHOP SRL declara ca **Releu inteligent PNI SafeHome PT180LV** este in conformitate cu Directiva EMC 2014/30/EU si RED 2014/53/UE. Textul integral al declaratiei UE de conformitate este disponibil la urmatoarea adresa de internet:

<https://www.mypni.eu/products/7242/download/certifications>