



PNI SafeHome PT51RG

Smart LED bulb / Bec inteligent



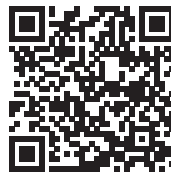
EN	User manual	2
RO	Manual de utilizare	6

Tuya Smart APP

Download the Tuya Smart app by accessing Google Play or the App Store or scan the QR codes below:



Android

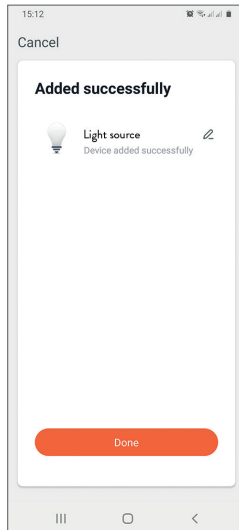
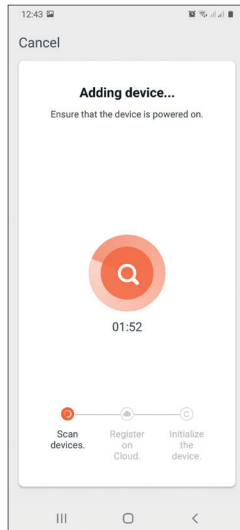
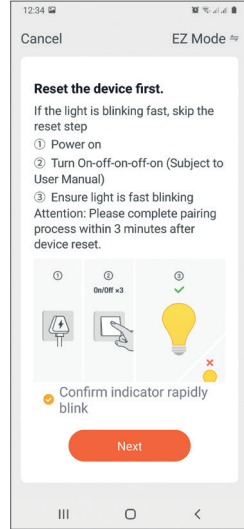
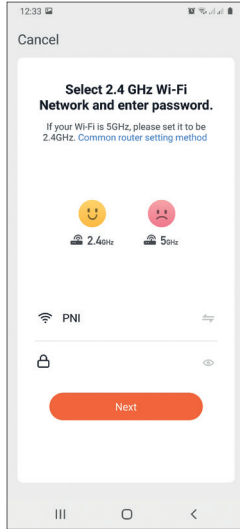


iOS

Add device in Tuya Smart application

1. Open the application, create an account and log in.
2. Add your device by clicking the + icon in the upper right corner of the screen or by clicking the **Add device** button (this button only appears when you do not have any devices added to the application).
3. Select the **Lighting** option on the left side of the screen.
4. From the list of devices on the right side of the screen, select **Light Source (Wi-Fi)**.
5. Select the WiFi network you want to connect to and add the password.
6. In the next interface, in the upper right corner, select the **EZ Mode** option.
7. Reset the device following the instructions in the application. Turn the light bulb on and off three times in a row, leaving it in the lit position at the end. If the bulb flashes quickly, then it is in pairing mode.
8. Check the **Confirm indicator rapidly blinks** option and click **Next**.
9. The application will scan nearby devices. After identifying your device, you will receive the **Added successfully** confirmation.

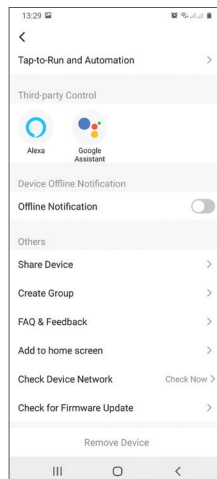
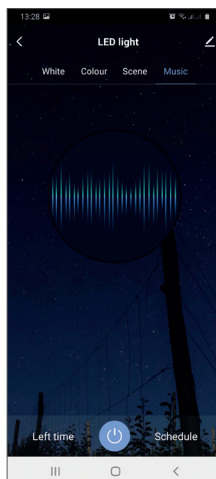
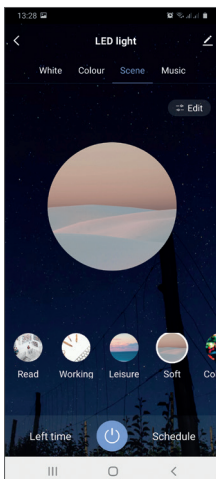
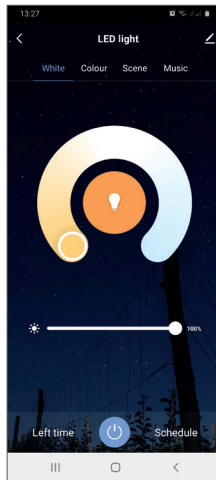
10. To finish, click the **Done** button.



Device control in the application

Select your smart bulb from the list of devices added to the application and choose the desired command:

- Turn the light on and off
- Change the light hue (hot or cold)
- Choose light color (RGB)
- Choose a predefined scenario
- Share the device etc.



Technical specifications

Bulb type	LED
Power	5W
Power voltage	230V
Light intensity	500 lm
Socket	GU10
Color	2700K-6500K+RGB
Connectivity	WiFi 2.4GHz
Compatible application	Tuya Smart (Android / iOS)
Dimensions	Ø 50mm x 68mm

Aplicatia Tuya Smart

Descarcati aplicatia **Tuya Smart** accesand Google Play sau App Store sau scanati codurile QR de mai jos:




Android

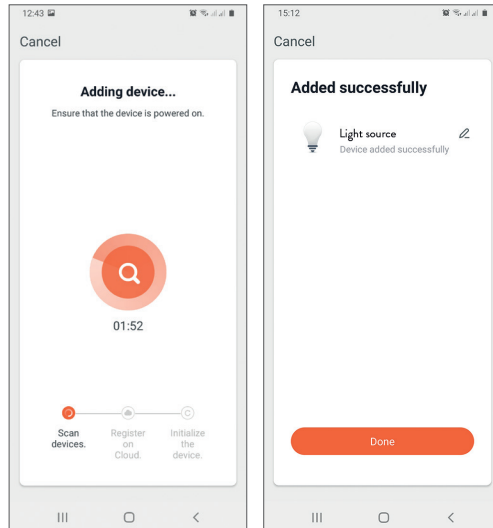
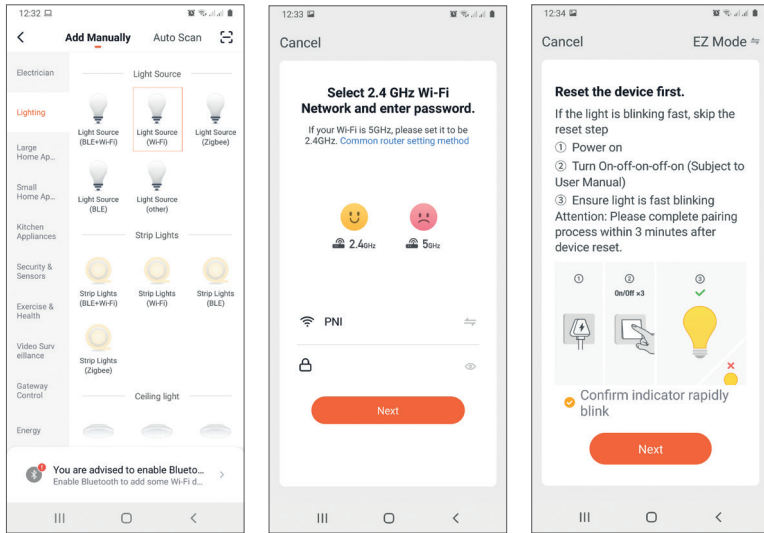


iOS

Adaugare dispozitiv in aplicatia Tuya Smart

1. Deschideti aplicatia, creati-va cont si autentificati-va.
2. Adaugati dispozitivul dvs. apasand pictograma **+** din coltul dreapta sus al ecranului sau apasand butonul **Add device** (acest buton apare doar atunci cand nu aveti nici un dispozitiv adaugat in aplicatie).
3. Selectati din partea stanga a ecranului optiunea **Lighting**.
4. Din lista de dispozitive din partea dreapta a ecranului, selectati **Light Source (Wi-Fi)** 
5. Selectati reseaua WiFi la care doriti sa va conectati si adaugati parola.
6. In interfata urmatoare, din coltul dreapta sus, selectati optiunea **EZ Mode**.
7. Resetati dispozitivul urmand instructiunile din aplicatie. Aprindeti si stingeti becul de trei ori consecutiv, lasandu-l la final pe pozitia aprins. Daca becul clipeste rapid, atunci acesta se afla in modul de imperechere.
8. Bifati optiunea **Confirm indicator rapidly blinks** si faceti click pe **Next**.

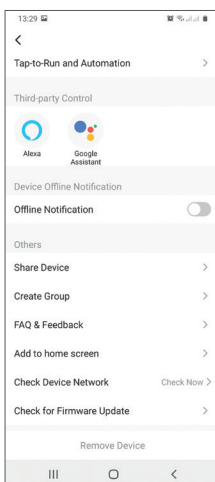
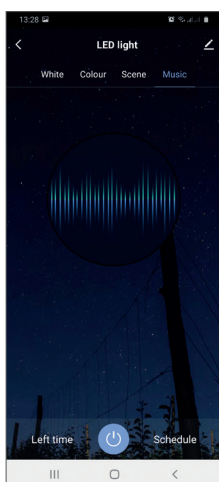
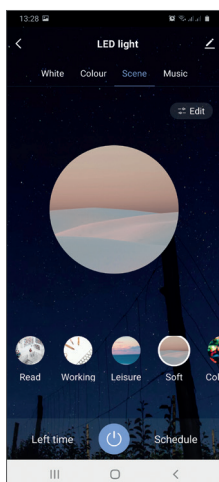
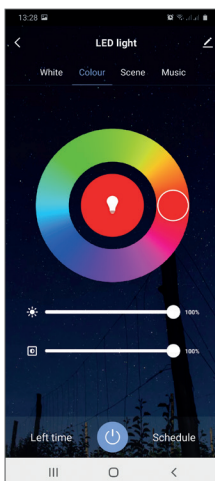
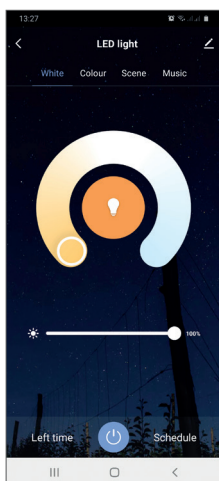
9. Aplicatia va scana dispozitivele din apropiere. Dupa ce va identifica dispozitivul dvs., veti primi confirmarea **Added successfully**.
10. Pentru a finaliza, faceti click pe butonul **Done**.



Control dispozitiv din aplicatie

Selectati din lista de dispozitive adaugate in aplicatie becul dvs. inteligent si alegeti comanda dorita:

- Aprindeti si stingeti becul
- Schimbati lumina (calda sau rece)
- Alegeti culoarea luminii (RGB)
- Alegeti un scenariu predefinit
- Partajati dispozitivul etc.



Specificatii tehnice

Tip bec	LED
Putere	5W
Alimentare	230V
Intensitate luminoasa	500 lm
Soclu	GU10
Temperatura de culoare	2700K-6500K+RGB
Conectivitate	WiFi 2.4GHz
Aplicatie compatibila	Tuya Smart (Android / iOS)
Dimensiuni	Ø 50mm x 68mm

EN:

EU Simplified Declaration of Conformity

SC ONLINESHOP SRL declares that **Smart LED bulb PNI SafeHome PT51RG** complies with the Directive EMC 2014/30/EU and RED 2014/53/UE. The full text of the EU declaration of conformity is available at the following Internet address:

<https://www.mypni.eu/products/7260/download/certifications>

RO:

Declaratie UE de conformitate simplificata

SC ONLINESHOP SRL declara ca **Bec inteligent PNI SafeHome PT51RG** este in conformitate cu Directiva EMC 2014/30/EU si RED 2014/53/UE. Textul integral al declaratiei UE de conformitate este disponibil la urmatoarea adresa de internet:

<https://www.mypni.eu/products/7260/download/certifications>