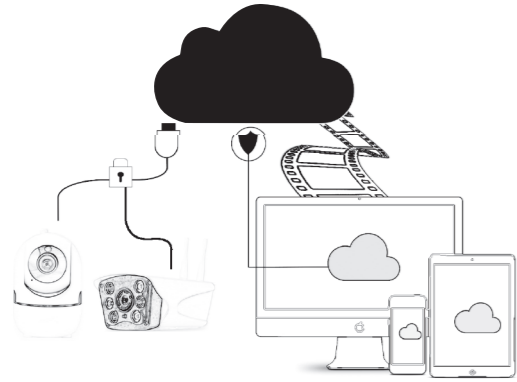




## IP Surveillance camera / Camera supraveghere video PNI IP22T cu IP 2MP 1080P, WiFi

### QUICK GUIDE



### 1. ABOUT PNI 1080P IP CAMERA

This PNI product is a 2MP IP camera intended for video/audio surveillance and remote monitoring of desired locations. It connects to the Internet by cable or Wireless in order to remotely transmit realtime video to dedicated app on your smartphone anytime and anywhere. It can save surveillance videos on local microSD card or other compatible devices like PNI surveillance NVR. The camera also supports alarm functions such as smartphone notifications push and much more other functions.

### 2. CAMERA INSTALLATION

#### Important conditions:

- Connect camera to a 230V power supply, using power adapter from package;
- First configuration of camera should be made with camera close to the Internet source / Router device; - If you need local recording, install a maximum 128 GB TF microSD card ( sold separately) in camera, by removing back panel ( one screw).

Search for "Tuya Smart" app for iOS/Android Smartphones in App Store/Google Play store, or scan the below QR code to download and install dedicated app:



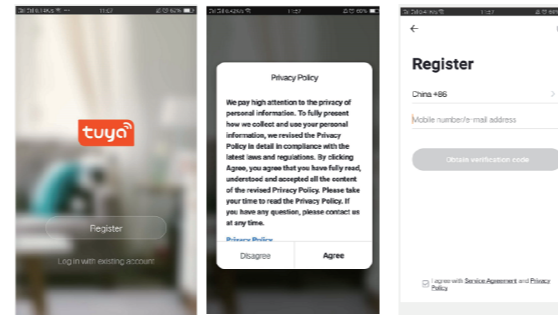
**Android & iOS app**

1

### 3. Register / Log in with existing account

#### 1. Register

If you do not have a Tuya App account yet, you can register an account or log in via personal e-mail or personal phone number using a verification code procedure. Please read and follow next steps for the description of registration process:



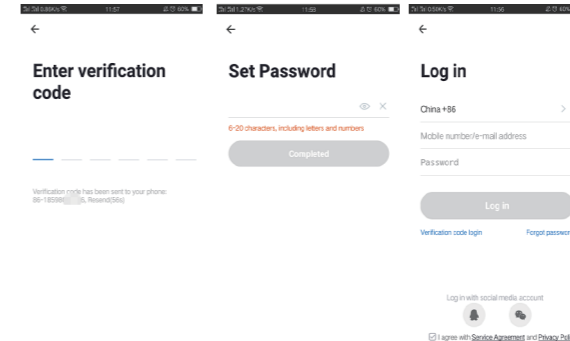
2

#### 2. Log in with existing account

If you have already registered an account, you can skip the creating a new account, click "Log in with existing account", enter the log in page.

- (1) The system automatically select the current Country/ Region, or you can manually select the Country/Region.
  - (2) Enter your registered e-mail address or mobile number enter your password to log in the system.
- If your phone has installed WeChat App or QQ App, click WeChat/QQ icon in the log in with social media account area. After accessing the authorization page, and filled in received code from your e-mail/phone log in the system.

3



### 4. Add Device

#### 2. QR code net-pairing(Recommended)

The product only support 2.4GHz Wi-Fi network. It does not support 5GHz Wi-Fi network. Before configuring Wi-Fi, please set the router parameters. The Wi-Fi password should not contain special characters of ~!@#%&\*(). When configuring Wi-Fi, make sure your router, mobile and device are as close as possible for a quick configuration of the device.

Connect smartphone to this Wi-Fi router with internet access. Activate location from phone menu.

- App supports QR code net-pairing and Wi-Fi connection. You can choose to add device by other options.
- Power On the camera, and you can hear the broadcast "Wait for WiFi config", (if you heard nothing at all, please click and hold "reset" button for 20 seconds to restore factory settings).
- When the mobile phone connecting to Wi-Fi, click "Add Device" or "+" icon (figure 1) on the Home screen of the App, select "Security & Sensor"(figure 2)→ "Smart Camera", click "next step" (figure 3).

Enter Wi-Fi account and password, click "Confirm" (figure 4).

3

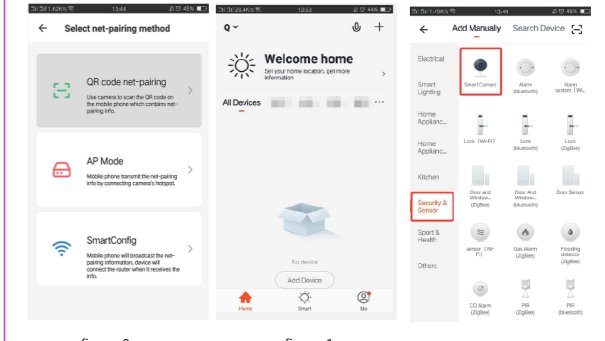


figure 0

figure 1

figure 2

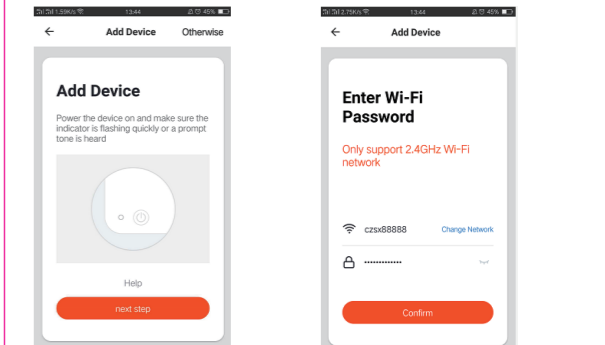


figure 3

figure 4

4

- Hold the mobile phone screen in the front of the camera (figure 5), the distance between the two should be 15 to 20 cm. (figure 6) Try not to shake the mobile phone during the scanning.

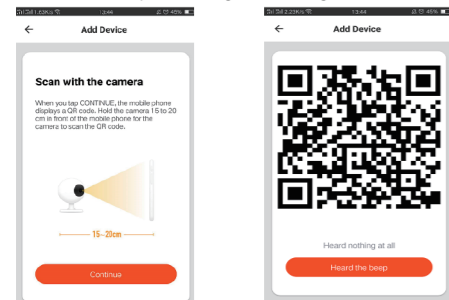


figure 5

figure 6

- When you hear "Connect Router", click "Connect Internet", and wait for connecting (figure 7)

- Device added successfully (figure 8), you can choose the device name and room scene

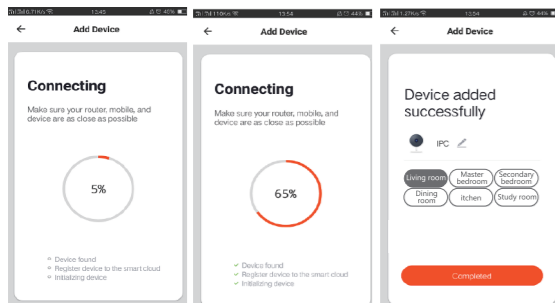


figure 7

figure 8

4.2 QR WIFI Fast Connection Distribution Network can be connected according to the above steps, skipping Fig. 5 and Fig. 6.

5

### 5. Function description

#### Real-time preview interface

1. Setting & Management
2. Wi-Fi signal strength
3. Sound switch
4. SD/HD
5. Full screen
6. Screenshot
7. Voice chat
8. Record live view
9. Playback of video
10. PTZ control (Optional depending on model):The camera can be rotated to give you a different perspective. You can move it up and down to capture any corner you want to view.
11. Motion detection alarm (notification through intelligent detection for movement detection. You can set the alarm level according to the camera's field of view to make the alarm more accurate)



#### 6. CLICK "ME" "I" "IN THE UPPER RIGHT CORNER OF THE CONTROL PAGE FOR THE MANAGEMENT AND SETTING OF THE DEVICE.

- Device Name - can modify the device name and device location;
- Device Information - to view: Device ID, Wi-Fi signal strength, IP address, Mac address, Device time zone.
- Tap-to-Run and Automation - View automations and scenarios created for this device
- Third Party Supported - Compatible smart services
- Basic Settings - Basic settings of camera

6

- IR Night Vision - Settings for IR function
- Detection Alarm Settings - can set the motion detection switch, motion detection alarm sensitivity and motion tracking function
- Storage settings - Shows microSD card informations, and settings for Local Recording mode.
- VAS - Value-added service : you can purchase separately video cloud storage service for this camera for monthly fee (optional according to customer needs)
- Offline Notification - Activates an alarm is camera goes Offline
- Share Device - can share this device to other people, enter the people's e-mail or mobile phone number; (Note: the entered e-mail / mobile phone number should be registered with a Tuya App account).
- FAQ & Feedback - Questions and solutions for any problems with product behaviour.
- Firmware Information - Support OTA Remote Upgrade (Do not disconnect during upgrading).

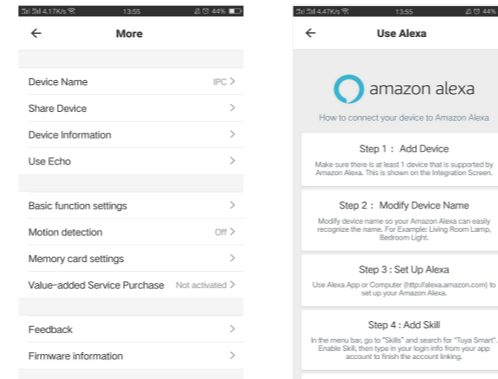


figure 9

figure 10

#### 7. CLICK "ME" ON THE HOME SCREEN OF TUYA APP FOR MORE SERVICES

1. Home Management
2. Message Center
3. FAQ & Feedback
4. More Services

7

- Free Services: IFTTT, Google Assistant, Alexa, etc;
- Value-added Services : you can check the purchasing record of purchased value-added services; Cloud Storage for Cameras, AI Filtered Notifications etc;
- 5. Settings and informations for youATuya app account: Sound, Notifications, Network, Cache

### FREQUENTLY ASKED QUESTIONS

- Q:Fail to add device during net-pairing?  
A:Please make sure the mobile phone and device are connected to 2.4GHz router. Make sure the correct Wi-Fi password is entered.  
Q:Still fail to add device after re-scanning?  
A:If fail to add device, it is recommended to restart the device or power off the device, and try again.  
Q: The device cannot preview?  
A:Check for weak Wi-Fi signal. You can place the camera closer to the router. If it still doesn't work, reset the device, and add it again.  
Q:Why the device is still on the list after resetting the device?  
A:The device resetting only resets the camera's network configuration and cannot change the configuration on the App. You must log in the App to delete the camera from the list.  
Q:How to connect the camera to another router?  
A:First log in the App to delete and reset the device, and configure the device again through the App.  
Q:Why the device cannot identify SD card?  
A:It is recommended to insert and remove the SD card after power off the device. Check if the SD card is under normal service conditions and the format is FAT32. The App shall suggest "could not find SD card" under unstable network of the mobile phone or the device.  
Q:The device is online and has an alarm event, but the mobile phone cannot receive the information?  
A:First confirm that App allows notification in the settings of your mobile phone.

Under normal circumstances, when an anomaly is detected, a message will appear in the notification bar of your mobile phone. You should set a notification sound or vibration in your mobile phone.

In addition, when viewing real-time video in the App you cannot receive alarm from the camera being viewed. Because the device default function the camera being viewed indicating that the user is focusing on the monitoring video, and there is no need for an alarm.

Using the advanced intelligent alarm push algorithm to ensure that the alarm message will not be frequently, but the camera will record all the alarm messages and videos.

8

### PRODUCT SPECIFICATIONS

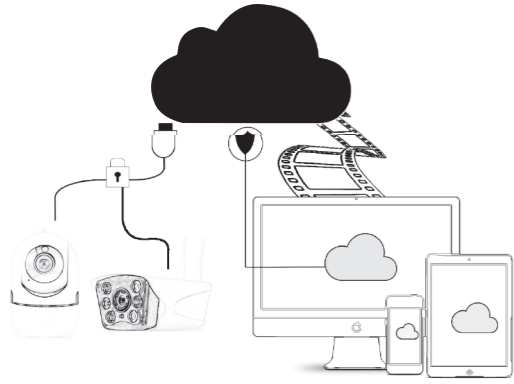
System	Main Processor	GK7102S
	Image sensor	GC2053
	Operation System	Embedded LINUX OS system
	Application	TUYA Smart / Smart Life
Video	High Definition	1080P
	Video Compression	Smart H.264+
	Rotation angle	/
	Object tracking	/
	low illumination	0.1LUX/F1.2
Lens Illumination	picture capture	Support
	Video Flip	/
Audio	Camera lens	3.6MM fixed lens
	Lamp board	10 IR LEDs ( 10 m max)
Record management	Coding standard	G.711
	Two-way Speech	Support
	Video file size	2.5GB-4.5GB/Day
Network	Record Mode	Manual record, motion detection record, scheduled record, alarm record
	Video storage	TF Card/Cloud
	Playback, back up	Support
	Alarm trigger	Alarm recording, screen capture
	Network interface	/
extend	WiFi	802.11b/g/n
	Bitstream	Three Stream
	Network Protocol	Support TCP/IP, RTSP, ONVIF, etc
	transmission mode	P2P, Smart Cloud Sever
power supply	WiFi connection	Sweep QR code, AP mode
	TF Card	Maximum support 128GB TF card
work environment	Reset key	Support
	Power	DC 5V 1.5 A
	Power consumption	5W
General	Weather proof degree	/
	Installation mode	Flat surface, Wall mounted, hoisting
	Working Temperature	-20 °C ~ +60 °C
	Working humidity	10% - 90%
	Material	ABS
	Product weight	/

9



# Camera supraveghere video PNI IP22T cu IP 2MP, 1080P, WiFi, PTZ

## GHID RAPID



### 1.Despre camera cu IP PNI 1080P

Camera PNI cu IP de 2MP este destinata supravegherii si monitorizarii video/audio de la distanta a locatiilor dorite. Camera se conecteaza la internet prin cablu sau wireless pentru a transmite imagini video in timp real catre aplicatia dedicata de pe smartphone-ul dvs. oricand si oriunde. Poate salva videoclipuri local pe cardul microSD sau pe alte dispozitive compatibile cum ar fi NVR-urile PNI. Camera este echipata de asemenea cu functiile de alarma la detectie miscare si notificari pe smartphone.

### 2. Instalare camera

- Conditii importante:**
- Conectati camera la o sursa de alimentare de 230 V, folosind adaptorul din pachet;
  - Prima configurare trebuie facuta in apropierea sursei de internet / router wireless;
  - Daca aveti nevoie de inregistrari locale, instalati in camera un card TF microSD de maxim 120 GB (nu este inclus ) indepartand panoul din spate (se desurubeaza un surub).

Cautati aplicatia „Tuya Smart” pentru smartphone iOS / Android in App Store / Google Play Store sau scanati codul QR de mai jos pentru a descarca si instala aplicatia dedicata:



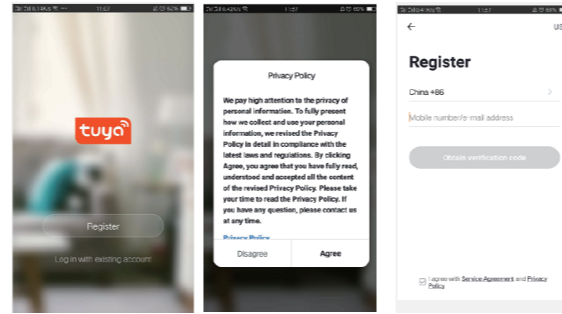
## Android & iOS app

1

### 3. Inregistrare / conectare cu un cont existent

#### 1Inregistrare

Daca nu aveti inca un cont in aplicatia Tuya, puteti sa va inregistrati/creati un cont sau sa va autentificati prin e-mail personal sau prin numarul de telefon personal, folosind o procedura cu cod de verificare. Cititi si urmati pasii urmatoari in care este descris procesul de inregistrare:

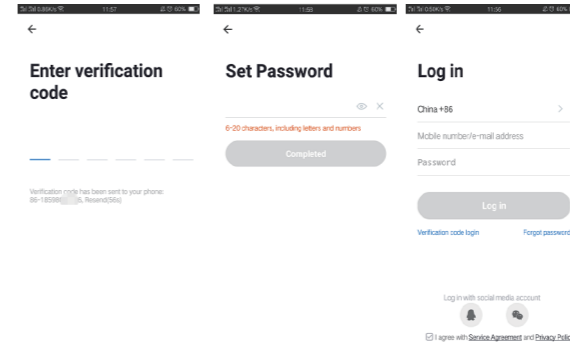


2

#### 2. Autentificare cu un cont existent

Daca aveti deja un cont in aplicatia Tuya, puteti sari peste crearea unui cont nou si faceti clic pe „Log in with existing account” pentru a accesa pagina de autentificare.

- (1) Sistemul selecteaza automat Tara / Regiunea curenta sau puteti selecta manual Tara / Regiunea.
- (2) Introduceti adresa dvs. de e-mail inregistrata sau numarul mobil si o parola pentru a va autentifica in sistem. Daca telefonul dvs. are instalata aplicatia WeChat sau QQ App, faceti clic pe pictograma WeChat / QQ in zona de logare cu un cont de social media. Dupa ce ati accesat pagina de autorizare si ati completat codul primit pe e-mail / telefon puteti sa accesati contul dumneavoastra.



3

### 4. Adaugare dispozitiv

#### 2. Procedura scanare QR-CODE (Recomandat)

Produsul accepta doar retele Wi-Fi de 2,4 GHz. Nu suporta retele Wi-Fi de 5 GHz. Inainte de a configura camera cu Wi-Fi, va rugam sa setati/verificati parametrii routerului. Parola Wi-Fi nu trebuie sa contina caractere speciale de tipul: ~!@#%\$%^&\*(). Cand configurati conexiunea Wi-Fi, asigurati-va ca routerul, telefonul mobil si camera sunt cat mai aproape posibil pentru a configura rapida a dispozitivelor. Conectati smartphone-ul la routerul Wi-Fi cu acces la internet. Activati locatia de la telefon, daca functia este disponibila.

- Aplicatia accepta configurare prin scanare cod QR sau configurare Wi-Fi. Puteti alege si alte optiuni de adaugare
- Porniti camera si in cateva clipe veti auzi mesajul „Wait for WiFi config” (daca nu auziti nici un mesaj va rugam sa apasati si sa mentineti apasat butonul „reset” timp de 20 de secunde pentru a restabili camera la setarile din fabrica).
- Cu telefonul mobil conectat la Wi-Fi, porniti aplicatia Tuya si faceti clic pe „Adaugati dispozitiv” saupictograma „+” (figura 1) pe ecranul principal al aplicatiei, selectati „Security & sensors” (figura 2) → „Smart Camera”, faceti clic pe „Next step” (figura 3). Verificati Numele retelei Wi-Fi si introduceti parola Wi-Fi, faceti clic pe „Confirmare” (figura 4).

3

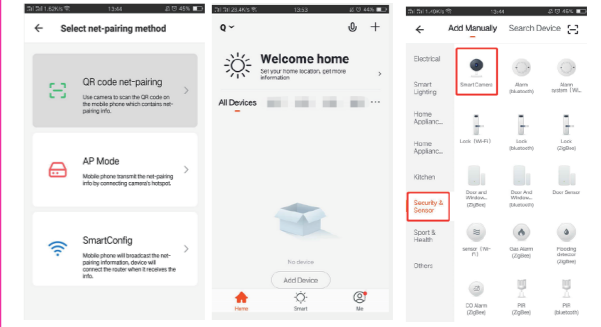


figure 0

figure 1

figure 2

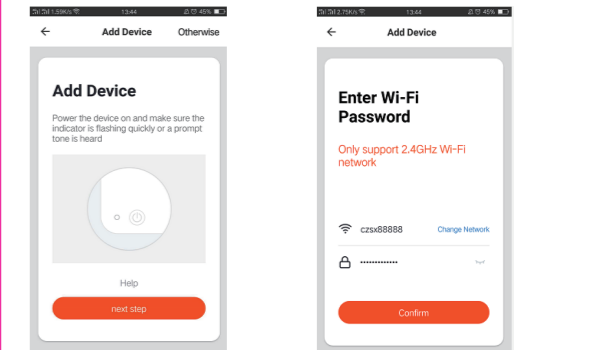


figure 3

figure 4

4

- Tineti ecranul telefonului mobil in fata camerei (figura 5) la distanta intre 15 - 20 cm. Miscati usor telefonul intre 15 si 20 cm (fata-spate)

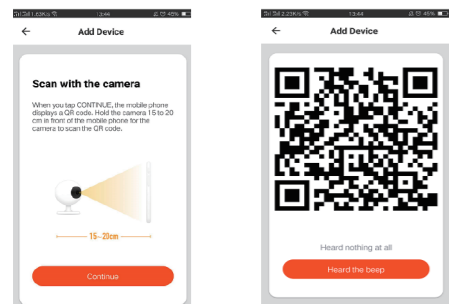


figure 5

figure 6

- Cand auziti „Connect Router”, faceti clic pe „Am auzit sunetul” si asteptati conectarea (figura 7).
- Dispozitiv adaugat cu succes (figura 8) si puteti alege numele dispozitivului si numele camerei/locatiei.

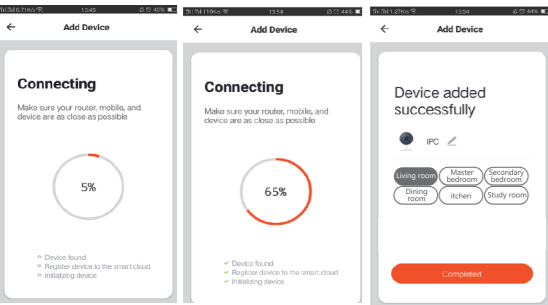


figure 7

figure 8

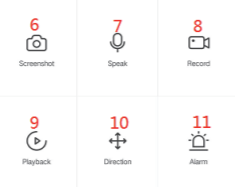
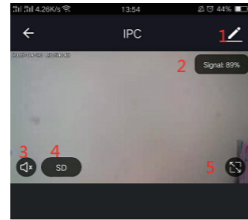
4.2 Alte metode de conectare (daca sunt disponibile) pot fi similare pasilor de mai sus, exceptand Fig. 5 si Fig. 6.

5

### 5. Descriere functii

#### Interfata vizualizare in timp real

1. Setare si informatii
2. Putere semnal Wi-Fi
3. Activare difuzor
4. Rezolutie SD/HD
5. Ecran complet
6. Captura ecran
7. Activare microfon
8. Inregistrare video live pe telefon
9. Redare inregistrari
10. Control Miscare/Directie (Camera poate fi rotita in mod arbitrar pentru a va oferi o perspectiva diferita. Puteti sa o mutati in sus si in jos ca sa capturati orice colt pe care doriti sa il vizualizati)
11. Alarma la detectie miscare (declanseaza o notificare prin detectarea inteligenta a miscarii). Puteti pleca la munca, iesi in oras sau pleca de acasa oricand cu incredere. Puteti seta nivelul de alarma in functie de imaginea inregistrata de camera pentru a face alarma mai precisa).



#### 6. APASATI „+” IN COLTUL DIN DREPTA SUS AL APLICATIEI PENTRU GESTIONAREA SI SETAREA DISPOZITIVULUI.

- Device Name - poate modifica numele dispozitivului si localia dispozitivului;
- Device Information - pentru a vizualiza: ID dispozitiv, nivel semnal Wi-Fi, adresa IP, adresa MAC, fus orar.
- Tap-to-Run and Automation - Vizualizati automatizari si scenarii create pentru acest dispozitiv
- Third Party Supported - Servicii inteligente compatibile
- Basic Settings - Setari de baza ale camerei

6

- IR Night Vision - Setari pentru functia IR
- Detection Alarm Settings - puteti activa functia de detectie a miscarii, sensibilitatea detectiei si functia de urmarire a miscarii
- Storage settings - Prezinta informatii despre cardul microSD si setari pentru modul de inregistrare locala.
- VAS - Serviciu cu valoare adaugata: puteti achizitiona separat serviciul de stocare video in cloud pentru aceasta camera contra unei taxe lunare (optional si contractat in functie de nevoile clientilor)
- Offline Notification - Activeaza o alarma/notificare daca camera se deconecteaza
- Share Device - puteti partaja acest dispozitiv cu alte persoane; introduceti adresa de e-mail a persoanei; (Nota: adresa de e-mail / numarul de telefon introdus trebuie sa fie inregistrat cu un cont Tuya App).
- FAQ & Feedback - Intrebati si soluti pentru orice situatie despre comportamentul produsului.
- Firmware Information - Asistenta actualizare firmware - OTA Remote Upgrade (Nu deconectati camera de la curent si nu va deconectati de la camera in timpul actualizarii).

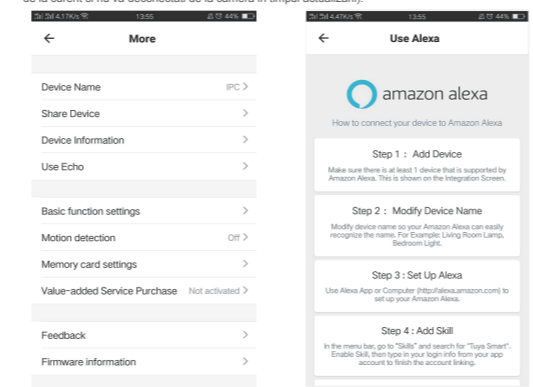


figure 9

figure 10

7

#### 7. FACETI CLIC PE „ME” PE ECRANUL PRINCIPAL AL APLICATIEI TUYA PENTRU MAI MULTE SERVICII

1. Home Management - Management familii
2. Message Center - Centru de mesaje si notificari
3. FAQ & Feedback - Intrebati si Raspunsuri
4. More Services - Alte servicii

- Free Services ( Servicii gratuite): IFTTT , Google Assistant, Alexa, etc;
- Value-added Services :puteti verifica posibilitatea achizitiei de serviciilor cu valoare adaugata (contractost): stocare in cloud, notificari filtrate inteligent AI etc;
- 5Setari si informatii pentru contul dvs. in aplicatia Tuya: Sound, Notifications, Network, Cache

### INTREBARI FRECVENTE

- I: Nu ati reusit adaugarea dispozitivului in timpul procedurii de imperechere ?  
R: Va rugam sa va asigurati ca telefonul mobil si dispozitivul sunt conectate la routerul de 2,4 GHz. Asigurati-va ca parola Wi-Fi este introdusa corect.  
I: Nu reusiti sa adaugati dispozitivul dupa re-scanare cod QR?  
R: Daca nu reusiti adaugarea, se recomanda sa reporniti dispozitivul sau sa il resetati si sa incercati din nou. I: Dispozitivul nu poate afisa imagini video?  
R: Verificati daca exista semnal Wi-Fi sau daca are un nivel scazut. Puteti testa nivelul de semnal aducand camera mai aproape de router.  
I: Cum conectati camera la un alt router?  
R: Mai intai conectati-va la aplicatie pentru a sterge si resetati dispozitivul, resetati si camera si apoi configurati-le din nou de la zero prin intermediul aplicatiei.  
I: De ce camera nu recunoaste cardul microSD?  
R: Se recomanda introducerea si scoaterea cardului microSD doar dupa oprirea dispozitivului. Verificati apoi functionalitatea cardului intr-un PC/ Laptop si daca formatul este FAT32. Aplicatia poate afisa eroarea „nu a putut gasi cardul SD” in caz de conexiune slaba a telefonului mobil sau chiar a camerei.  
I: Dispozitivul este online si are un eveniment de tip alarma, dar telefonul mobil nu afiseaza notificarea?  
R: Mai intai, confirmati ca aplicatia are toate permisiunile de notificari activate in setarile telefonului mobil. In circumstante normale, cand este declansata o alarma, un mesaj va aparea in bara de notificari a telefonului mobil. Ar trebui sa setati un sunet sau o vibratie la notificarea in telefonul dvs. mobil. Atentie atunci cand vizionati video in timp real in aplicatie, nu veti primi alarme de la camera video deoarece functia implicita a dispozitivului este vizualizarea camerei moment in care se considera ca utilizatorul urmareste deja imaginile live, si nu mai sunt necesare notificari.  
Datorita algoritmului avansat inteligent de trimitere a notificarilor veti primi mai putine mesaje de alarma, desi camera va inregistra toate mesajele si pozele de alarma.

8

### SPECIFICATI

System	Procesor	GK7102S
	Senzor imagine	GC2053
	Sistem de operare	Embedded LINUX OS system
	Aplicatii	TUYA Smart / Smart Life
Video	Rezolutie	1080P
	Comprese Video	Smart H.264+
	Unghi de rotatie	Horizontal:355° ; vertical: 90°
	Urmarire obiect	Da
	Iluminare minima	0.1LUX/F1.2
Lentile iluminare	Captura imagine	Da
	Imagine rasturnata	/
	Obiectiv	3.6MM lentila fixa
Audio	Leduri	10 LED-uri IR (maxim 110 m)
	Standard codare	G.711
Record management	Comunicare bidirectionala	Da
	Marime fisier video	2.5GB-4.5GB/Day
	Mod inregistrare	Inregistrare manuala, Inregistrare la detectie miscare/alarma, Inregistrare programata
	Stocare video	TF Card/Cloud
Network	Redare inregistrare	Da
	Declansare alarma	Inregistrare la alarma,Captura ecran
	Interfata retea	/
	WiFi	802.11b/g/n
	Piste video( stream)	3 piste ( Stream)
Auxiliar	Protocol de retea	Support TCP/IP, RTSP, ONVIF, etc
	Mod transmisie	P2P, Smart Cloud Server
	Mod Conectare	Adaugare cod QR, Mod AP
Alimentare	TF Card	Card TF microSD maxim 128GB ( nu este inclus )
	Reset key	Da
Conditii de utilizare	Alimentator	DC 5V 1.5 A
	Consum	5W
	Grad de protectie	/
	Mod instalare	Suprafata orizontala, Perete, Tavan
General	Temperatura functionare	-20°C - +60°C
	Umiditate	10% - 90% fara condens
	Material	ABS
	Greutate	/

9