

Wireless Camera User Manual

Before operating this unit, please read these instructions carefully, and save them for future use.

EN CH

* This instruction manual is for reference only.

1. APP Download and Installation

Users can search "EseeCloud" on APP store or "IP PRO" on Google Play, or scan the QR code below to install the APP.



EseeCloud APP download



IP PRO APP download

Note: For IOS system, it requires IOS 9.0 version or above. For Android, Android 4.4 or above.

2. Software Operation

2.1. Log in

This APP support "account log-in", "third-party log-in" and "local experience".

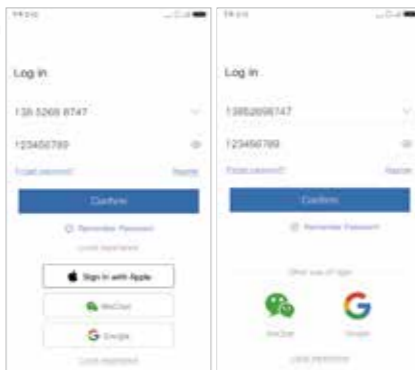
Account log-in: At log-in interface, input user name/cellphone number/e-mail address and password, click "Confirm" and log in.

Third-party log-in: Click the icon of third-party network social software, authorize the APP to log in.

Local experience: Users can use the APP without log-in.

Remember the password: Support remembering the account and password that have been logged in, which is convenient for switching account login.

Note: Please pay attention that "Local experience" mode will be stored at local. Once data is lost, it can't be restored.



iOS

Android

2.2. Registration

Input cellphone number/email address to register, get verification code. Input verification code and password, click "Confirm". After registration it will move to device list.

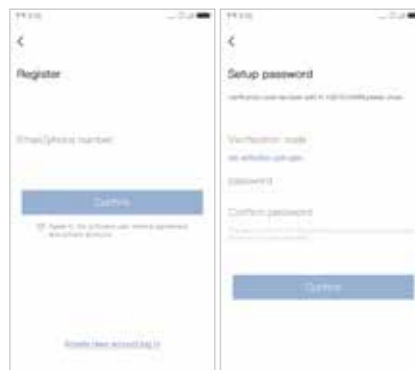


Fig 2.1

Fig 2.2

2.3. Reset Password

Input registered cellphone number /email address to get verification code. Input verification code, reset password and click "Confirm". Then go back to log-in interface, log in with new password.

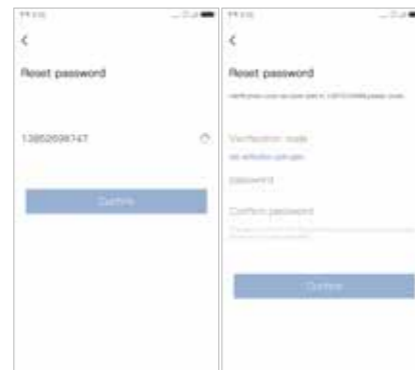


Fig 2.3

Fig 2.4

3. Add Device

- After logging in, jump to the device list, and click the "+" add button on the interface (Figure 3.1) to jump to the QR code scanning interface (Figure 3.2).
- If there is a QR code on the device or on the monitor, please refer to the QR code scanning process of adding device in 3.1; If you cannot find the QR code, please check the adding process in 3.2.

Note: When adding the device, please make sure that the phone camera, WIFI and positioning permission are turned on.



Fig 3.1

Fig 3.2

3.1. Scanning and adding devices (There is QR code)

How to add a non-networked device

- Please go to the mobile phone system settings and select the device hotspot starting with IPC. The default password is 11111111 (Figure 3.3) (Notice: please keep connected with the device hotspot);
 - Open the EseeCloud app, input the QR code scanning interface to scan the device QR code (Figure 3.4), and on the search device interface (Figure 3.5), click "Add";
 - For viewing and using via WiFi or other networks, please choose to use it remotely; if there is no network, connect the camera at close range for viewing, please select local connection (Figure 3.6);
- Remote view: Click the "Remote view" button (Figure 3.6) to go to the configuration network interface. The system will display the WiFi search near the device below the interface. Select or enter the router's WiFi name and password at home (Figure 3.7), and click OK to configure device WiFi

(Figure 3.8). After the configuration is successful, follow the interface to complete the device name and password settings (Figures 3.9 and 3.10), and return to the device list after adding successfully.

Direct connection: Click the "Direct connection" button (Figure 3.6), pop-up box for setting the device name, follow the interface steps to complete the device name and password settings (Figure 3.9, 3.10), after adding successfully, return to the device list to display the added device.

How to add networked devices

- Open the EseeCloud APP, enter the QR code scanning interface to scan the QR code on the device or the monitor (Figure 3.4), and in the search device interface (Figure 3.5), click "Add";
- Follow the interface to set the device name (Figure 3.9), input the correct device password (Figure 3.11) (skip this step if the device has no password), and return to the device list after adding successfully.



Fig 3.3

Fig 3.4

Fig 3.5

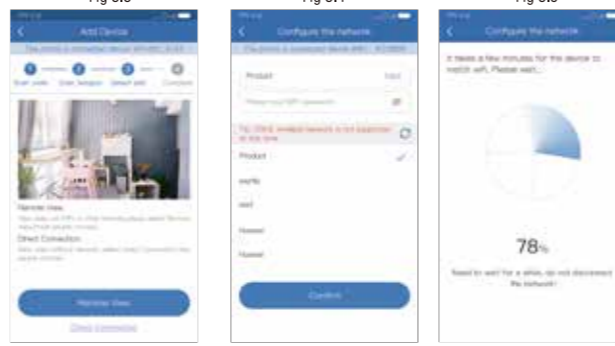


Fig 3.6

Fig 3.7

Fig 3.8

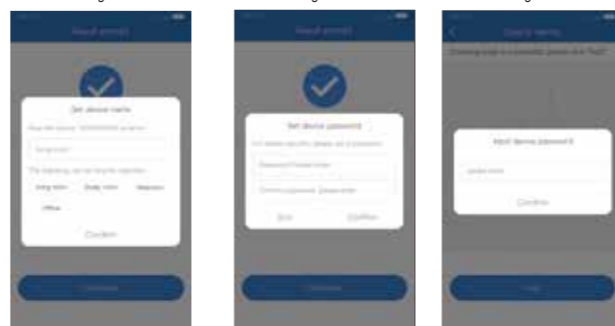


Fig 3.9

Fig 3.10

Fig 3.11

3.2. Other adding methods (Device QR code cannot be found)

How to add a non-networked device-standalone camera

- Please go to the phone system settings and select the device hotspot starting with IPC. The default password is 11111111 (Figure 3.12) (please keep connected with the device hotspot during the connection process);
- Open the EseeCloud App, enter the QR code scanning interface, and click "Other Ways to Add" (Figure 3.13);
- Select the wireless standalone camera (Figure 3.14). For the subsequent network configuration steps, please refer to the adding process in 3.1 Adding a non-networked device(3).

How to add networked devices

1: Process of adding wireless NVR Kit

- Please connect the KIT device to a router that can access the Internet through a network cable;
- Open the EseeCloud App, input the QR code scanning interface, and click "Other Ways to Add" (Figure 3.13);
- Select the KIT (Figure 3.14);
- After inputting the device ID, name, and device password (Figure 3.15), click complete in the upper right corner to return to the device list after the addition is successful (Figure 3.16).

2: Adding process of LAN search device

- Please go to the mobile phone system to set the currently connected WiFi of the connected device, and ensure that the mobile phone and the device are under the same routing WiFi;
- Open the EseeCloud APP, enter the QR code scanning interface, and click "Other Ways to Add" (Figure 3.14);
- Select LAN scan (Figure 3.15);
- Select the required device ID in the scanning interface (Figure 3.17), click Add to enter the ID adding interface, enter the device name and device password, and click complete in the upper right corner to return to the device list after the addition is successful.

3: Process of adding networked devices

- Open the EseeCloud APP, enter the QR code scanning interface, and click "Other ways to add" (Figure 3.13);
- Select the networked device (Figure 3.14);
- After entering the device ID, name, and device password (Figure 3.15), click complete in the upper right corner to return to the device list after the addition is successful (Figure 3.16).



Fig 3.12

Fig 3.13

Fig 3.14

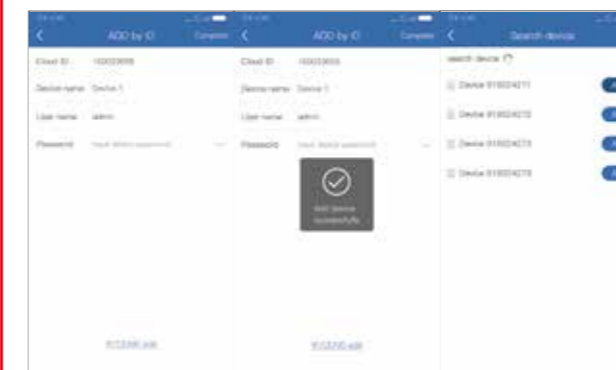


Fig 3.15

Fig 3.16

Fig 3.17

3.3. Add Shared Device

Click the "+" add button on the device list to jump to the scan code scanning interface, scan the shared device QR code, enter the search device interface, confirm the addition and return to the device list interface to prompt the addition result. (Figure 3.18-3.20).

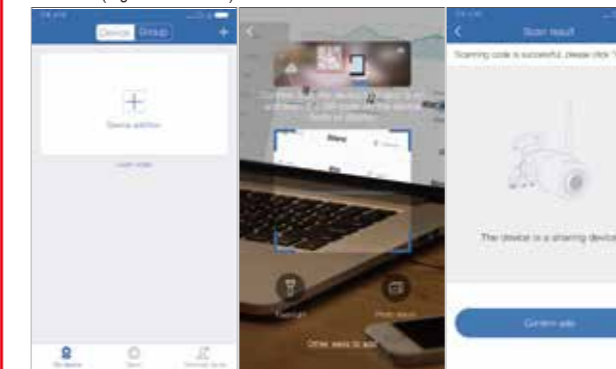


Fig 3.18

Fig 3.19

Fig 3.20

4. Preview Playback

4.1. Operating instructions

Device list: After adding the device successfully, the device list will display the device card, showing the device name, online and offline status, sharing, playback, alarm messages, settings and more function buttons, click the thumbnail to enter the preview interface. (figure 4.1).

Preview: Click the thumbnail of device channel to enter the preview interface, and click the full screen button to switch to landscape display (Figure 4.7). The preview interface functions can be adapted according to the device.

Intercom function: Click the intercom button (Figure 4.2), the APP initiates an intercom to the device. After the launch is successful, it prompts that the intercom is successful. The interface displays the intercom and hang up buttons (Figure 4.3). Click the hang up button to end the intercom; (when the device is in the intercom state, other users cannot initiate an intercom to the device).

PTZ preset function: Click the PTZ button (Figure 4.2) to display the PTZ function (Figure 4.4). You can slide the control button or click the direction arrow to control the camera direction and adjust the monitoring area.

(1) Click the preset button to display the preset position below the interface

(Figure 4.5), you can add, recall, and delete preset positions; preset positions are divided into normal mode (Figure 4.5) and shortcut mode (Figure 4.6); (2) Click the speed level button to pop up the PTZ speed level selection pop-up box; click the lens control button to change the camera focal length, magnification and other functional parameters.

Playback: Click the playback button (Figure 4.2) to switch to the playback interface (Figure 4.7), you can view the video, filter the recording date.

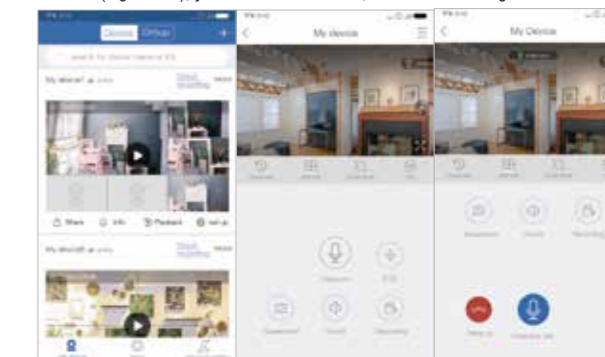


Fig 4.1

Fig 4.2

Fig 4.3

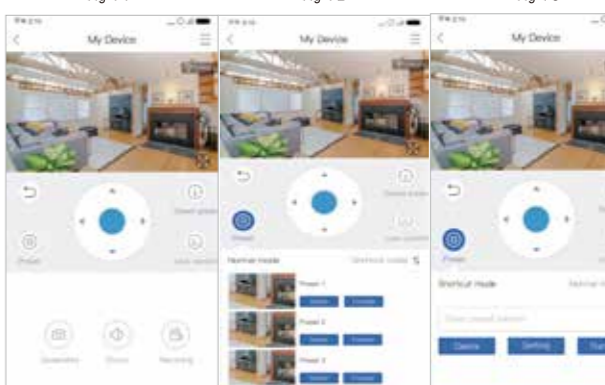


Fig 4.4

Fig 4.5

Fig 4.6



Fig 4.7

Fig 4.8

4.1.1 Functions of Button

Function	Details
Switch definition	Switch definition of previewing
Audio	Play audio on/off in the area
Auto cruise	When the single screen fails to fully display the monitor screen after opening, the left and right cruise moves
Mounting mode	Select the installation mode of the device: upside down mode and wall-mounted mode
Original mode	Applicable to the upside down installation mode and the wall mount installation mode. After the selection, the preview screen of the device is converted to the fisheye mode
Cylinder mode	Applicable to the upside down installation mode, the preview screen of the device is switched to the cylinder mode after selection
Corridor mode	Applicable to the upside down installation mode, after selecting the device's preview screen to convert to corridor mode
Four-screen mode	Applicable to the upside down installation mode, after selecting the device's preview screen to convert to quad screen mode
Spread mode	Applicable to the wall mount mode, the preview screen of the device is switched to the expanded mode after selection
Asteroid mode	Applicable to P720 devices, the preview image of the device is switched to asteroid mode after selection
Crystal ball mode	Applicable to P720 devices, the preview screen of the device is converted to crystal ball mode after selection
Spread mode	Applicable to P720 devices, the preview screen of the device is switched to the spread mode after selection

VR mode	When suitable for landscape mode, some devices can use VR mode, and the preview image of the device is converted to VR mode after selection
Full screen button	Suitable for horizontal screen vertical screen switching. The full screen icon on the left and the full screen icon on the right
White light controller	Suitable for NE devices, switches for control devices
Snapshot	Capture the device preview screen seen on the current phone screen
Recording	Take a preview of the device you see on the current phone screen
Talk	Suitable for devices with microphone hardware
PTZ control	Applicable to devices with pan/tilt function, click to switch to the PTZ control interface
Switch playback /Preview	Switch video playback and play in real time
Playback timeline	Suitable for preview playback. Drag the timeline to modify the playback time, and click the calendar button on the right to switch the date
Screen aspect ratio	In addition to the panoramic device, when previewing the playback interface, the video screen aspect ratio can be set to support three different ratio selections
Timeline zoom button	The zoom of the playback timeline can be adjusted by clicking

4.3 Gesture operation illustration

- Two finger touch screens are stretched out to enlarge the picture.
- Two finger touch screens are stretched inward to reduce the picture.
- Double-click on the screen to zoom in and out.
- Single-point left/right and up/down to slide the screen.