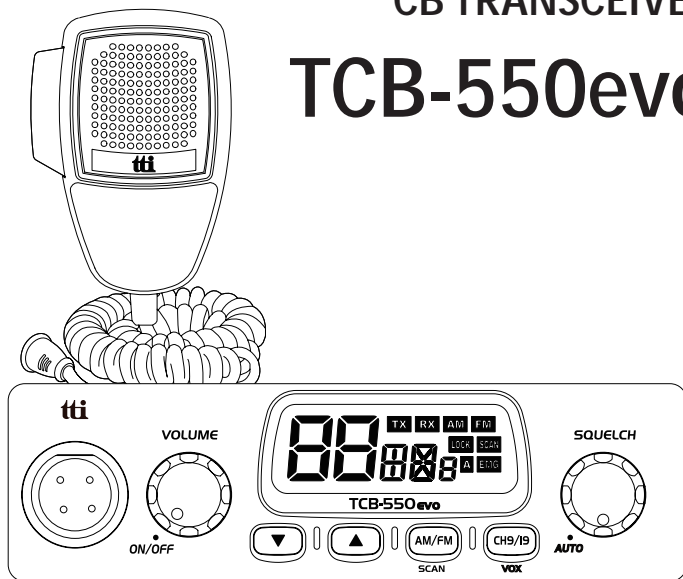


4W MOBILE CB TRANSCEIVER TCB-550evo

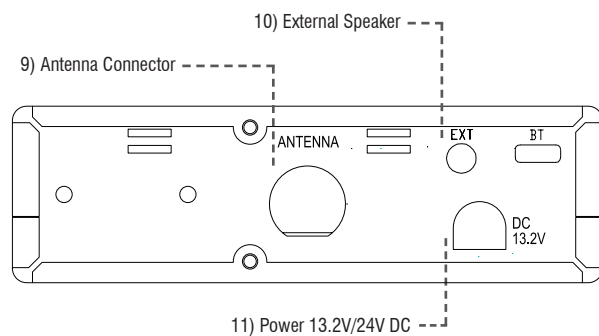
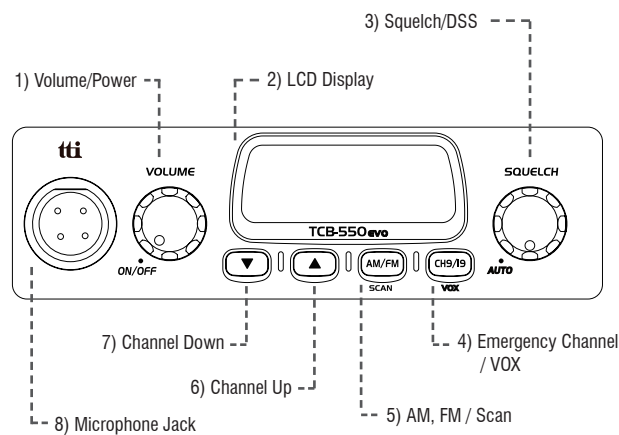


INSTRUCTION MANUAL



P/N 820-C55N-E00

4. Transceiver Controls and Functions



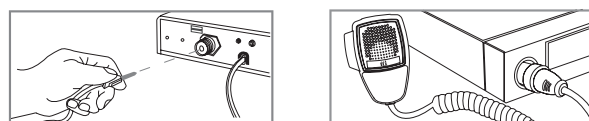
1. Supplied Accessories

Your transceiver is supplied with a full range of accessories to help you get started and virtually benefit from all the features straight away.

TCB-550evo Transceiver	1 unit
Microphone with cord	1 unit
Radio mounting bracket	1 unit
Radio mounting thumb screw with rubber washer	2 pieces
Mounting screw with washer (for transceiver bracket)	3 pieces
Mounting screw with washer (for microphone bracket)	2 pieces
Microphone mounting bracket	1 unit

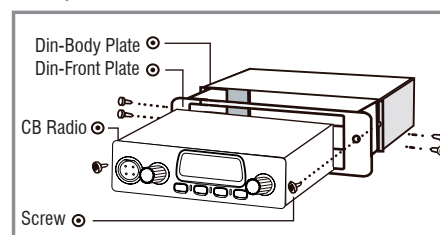
2. Installation

Normal Installation using Mounting Bracket



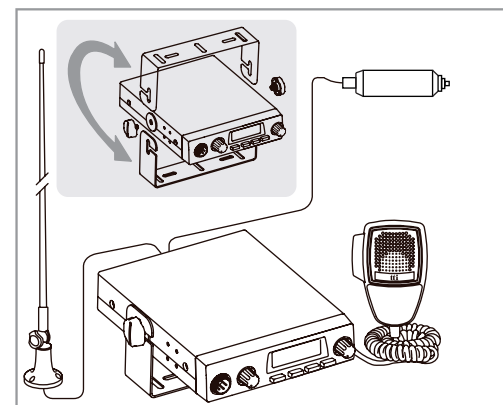
- Put the mounting bracket on the proper location where you are going to install.
 - Drill holes and fix mounting bracket on the location.
 - Connect the antenna cable plug to the standard receptacle on the transceiver, which is marked "ANT".
 - Connect the radio using the included cigarette lighter plug.
 - Mount the microphone bracket on one side of the transceiver, or near it using two screws included.
 - Connect the microphone to the transceiver's microphone receptacle.
- Now you are ready to operate the transceiver.

Installing into Audio Compartment



- Install the Din-Body plate into the audio compartment (center fascia) of your vehicle. (Use the ready made locking flaps.)
- Set the transceiver in the Din-Front plate, and insert the transceiver in the Din-Body plate.
- Fix the screws through the transceiver, Din-Front plate and Din-Body plate.

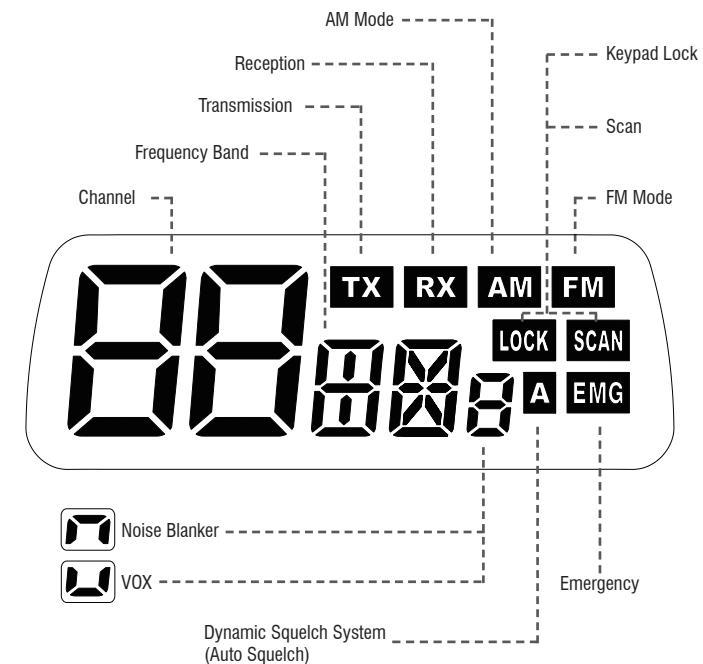
Installing an Antenna



- Place the antenna as high as possible.
- The longer the antenna is, normally the better is the performance of the transceiver.
- Try to mount the antenna in the centre of the surface that you select.
- Make sure that you have a solid metal-to-metal ground connection.
- Be careful not to damage the cable during the installation.

Warning : Never try the operation of your transceiver before connecting a proper antenna in order not to cause any damage.

3. LCD Display



1) Volume / Power Knob

2) LCD Display

3) Squelch / DSS Knob
Manual Adjustment : Turn this knob counter-clockwise until you hear the background noise and then turn the knob a little clockwise until the noise disappears. In this way, you get the best receive sensitivity.
DSS : Turn the knob counter-clockwise until you hear the click. The squelch level of your transceiver is dynamically adjusted.

4) Emergency 9,19 / VOX Button
Short press to go to the emergency channel (9 or 19).
Long press to activate the VOX.

5) AM,FM / Scan Button
Short press to change AM / FM.
Long press to activate Scan function.

6) Channel Up Button

7) Channel Down Button

8) Microphone Jack

9) Antenna Connector

10) External Speaker Jack

11) Power 13.2V / 24V DC

12) Band Selection
Pressing AM/FM button and Turn on the transceiver to access Band Selection. Use Up/Down button to change Band.

13) Menu Mode
Pressing CH9/19 button and Turn on the transceiver to access Menu mode. Use AM/FM button to select the setting.

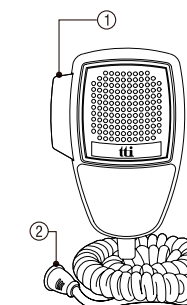
<MENU>

Display	Functions	Settings
bp	Beep Tone	On, Off
Vo	VOX	Hi, Mid, Lo
nb	Noise Blanker	On, Off
to	Time-out Timer	1-99 sec., Off
bc	Backlight Color	Blue, Purple, Red
d l	Backlight Dimmer	Hi, Lo

<BAND Chart>

Setting	Display	Settings
EC	EC	Europe 40ch. FM 4W
EU	EU	Europe 40ch. AM/FM 4W
D	d	Germany 80ch. FM 4W, 40ch. AM 4W
I2	I2	Italy 34ch. AM/FM 4W
I	I	Italy 40ch. AM/FM 4W
UE(EU/UK)	UE	UK 40ch. FM 4W (British Frequencies) + CEPT 40ch. FM 4W(EC)
UK	UH	UK 40ch. FM 4W (British Frequencies)
PL	PL	Poland 40ch. AM/FM 4W (Polish Frequencies : 5KHz)
F	F	France 40ch. FM 4W, 40ch AM 4W
E	E	Spain 40ch. AM/FM 4W

5. Microphone



- PTT Button
- 4 Pin Microphone Connector

6. How to operate the Transceiver

- Make sure the microphone is connected to the microphone jack.
- Make sure the power cable is connected properly.
- Make sure the antenna is connected to the antenna receptacle.
- It is better to put the squelch control knob turned fully counter-clockwise.
- Turn on the transceiver and control the volume level.
- Adjust the squelch control knob to the optimum level.
- Select your desired channel.
- To transmit, press the PTT button and speak to the microphone.
- Release the PTT button to receive.

7. Trouble shooting

If you experience problems with your TCB-550evo transceiver, first check the power supply source. Poor connection of the power supply source can cause problems such as no transmission, no reception or poor reception, and weak or no sound. Ensure that the microphone and antenna are also well connected. If this does not solve the problem, reset your transceiver as follows.

- Switch off the transceiver.
- Pressing both AM/FM button, 9/19 button and turn on the transceiver.

This will reset the transceiver, so all the memories are erased and the parameters return to the initial factory setting. This should fix most problems. In case of further difficulty, please consult your dealer or visit our website.

8. CE Declaration



CE versions of the TCB-550evo which display the CE symbol on the product label, Comply with the essential requirements of the Radio Equipment Directive (RED) 2014/53/EU.

This warning symbol indicates that this equipment operates in non-harmonized frequency bands and/or maybe subject to licensing conditions in the country of use.

Be sure to check that you have the correct version of this radio or the correct programming of this radio, to comply with your national licensing requirements.

This unit can be used without license and charges in; Austria, Belgium, Bulgaria, Cyprus, Czech, Denmark, Estonia, Finland, France, Germany, Greece, Hungary, Iceland, Ireland, Italy, Latvia, Lithuania, Luxembourg, Malta, Netherlands, Norway, Poland, Portugal, Romania, Slovakia, Slovenia, Spain, Sweden, Switzerland, and U.K.

9. Safety Requirement

The power cable is for 13.2 / 24V DC only. Be sure the transceiver is off before connection the leads of the power cable to the power supply. It is important to observe the polarity even if the unit is protected against the accidental inversion :

- * Red : Positive pole (+)
- * Black : Negative pole (-)

The same colors are present on the battery and in the fuse box of the car. The unit must be wired for the negative ground only. To avoid damage, do not operate your CB radio without connecting a proper antenna

10. Specifications

GENERAL	Channel	40 (See the frequency band chart)
	Frequency Range	26.965 MHz ~ 27.405 MHz
	Operating mode	F3E (FM), A3E (AM)
	Frequency Control	PLL Synthesizer
	Frequency Tolerance	0.002%
	Operating Temperature Range	-10 to +55 °C
	Microphone	Plug-in Type
	Input Voltage	13.2 / 24V DC ± 15%
	Size	124 (W) x 135 (L) x 37 (H)
	Weight	590 g
Antenna Connector	SO-239 type	
TRANSMITTER	Power Output	Duty cycle 10% 4 Watts @ 13.2V DC
	Modulation	AM: from 85% to 95% FM: 1.8KHz ± 0.2KHz
	Frequency Response	300Hz to 3000Hz
	Output Impedance	50ohms, Unbalanced
	Harmonic Suppression	Less than -36dBm
Current Drain	AM Full Mod. 1.6A Max.	
RECEIVER	Receiving System	Dual conversion superheterodyne
	IF Frequencies	Double conversion 1st 10.695MHz/2nd 455KHz
	Sensitivity	0.7µV for 10dB(S+N)/N in AM Mode 0.7µV for 20dB SINAD in FM Mode
	Audio Output Power	2W @ 8ohm
	Audio Distortion	Less than 8% @ 1KHz
	Image Rejection	More than 60dB
	Adjacent Channel Rejection	More than 60dB
	Conducted Spurious	Less than -57dBm
	Frequency Response	300Hz to 2500Hz
	Built-in Speaker	8ohms, Round
	Squelch	Adjustable; Threshold less than 1µV DSS; Less than 2µV

* Specification is subject to change without prior notice.

11. Restrictions on the use

Country	Band	Use restrictions and other comments
BELGIUM SWITZERLAND	EU F EC	40 Ch - 4W FM - Individual licence is required 40 Ch - 4W AM - Individual licence is required
DENMARK,NORWAY LUXEMBOURG,CZECH	EC	40 Ch - 4W FM - Free use
FINLAND,PORTUGAL FRANCE,NETHERLANDS	EU F EC	40 Ch - 4W FM - Free use 40 Ch - 4W AM - Free use
GERMANY	D EU D2 EC	80 Ch - 4W FM - Individual licence is required 40 Ch - 4W AM - Individual licence is required 40 Ch - 4W AM - Use ch 4-15 only 40 Ch - 4W FM - Free use 12 Ch - 4W AM - Individual licence is required
		fx Allowed: from 26.960 to 27.410 MHz "BAPT 222 ZV 104"
GREECE	E EU F I EC	40 Ch - 4W FM - Free use 40 Ch - 4W AM - Free use
		T/R 20-02
IRELAND	E EU F I EC	40 Ch - 4W FM - Free use 40 Ch - 4W AM - Free use
		S.I. No 436 of 1998. WIRELESS TELEGRAPHY ACT, 1926 (SECTIONS) (EXEMPTION OF CITIZENS' BAND (CB) RADIOS) ORDER, 1998
ITALY	E EU F I EC I2	40 Ch - 4W FM - General authorization is required 40 Ch - 4W AM - General authorization is required 34 Ch - 4W FM 34 Ch - 4W AM(ERP) *AM mode allowed on ch1-23 only
		PNF issued on DM 08.07.02 NOTES 49 A-B-C-D-E-G
SPAIN	E EU F EC	40 Ch - 4W FM - Individual licence is required 40 Ch - 4W AM - Individual licence is required
		Art. 57 - Law 11/1998 dated 24th April
SWEDEN	EU F EC	40 Ch - 4W FM - Free use 40 Ch - 4W AM - Individual licence is required
UK	UK EU	40 Ch - 4W FM - Free use 40 Ch - 4W AM - Free use
POLAND	PL EU EC	40 Ch - 4W FM / AM - Free use

<< Declaration of Conformity >>

We, TTI Tech Co., Ltd. (#1312 361 Simindaero Dongan-gu Anyang-si Gyeonggi-do Korea) declare on our sole responsibility that this equipment complies with the essential requirements of the Radio Equipment Directive (RED) 2014/53/EU, and that any applicable Essential Test Suite measurements have been performed.

Kind of equipment : MOBILE CB TRANSCEIVER

Type-designation : TCB-550evo

Version (where applicable) :

This compliance is based on conformity with the following standards, specifications or documents :

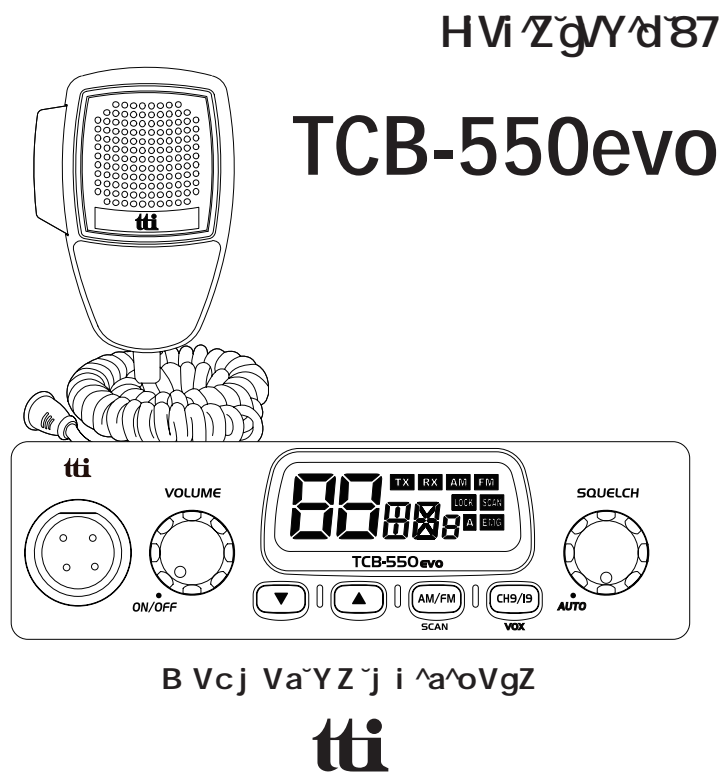
EN 62311:2008
EN 50665:2017
EN 62368-1:2014+A11:2017
EN 301 489-1 V2.2.3:2019-11
EN 301 489-13 V1.2.1:2002-08
EN 300 433 V2.1.1 (2016-05)



N. Y. Kim
Director

Korea, Oct. 2022

Signature

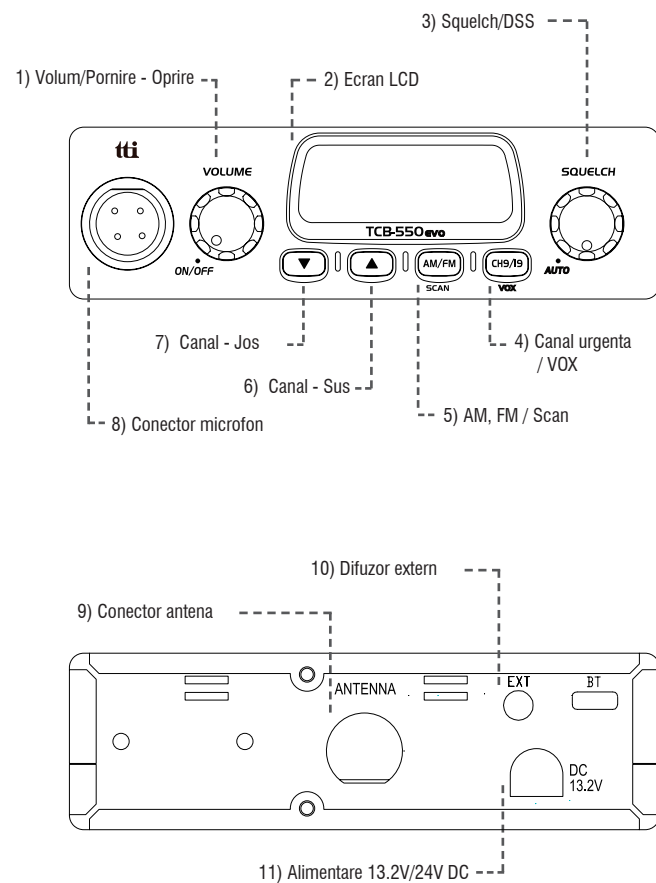


TCB-550evo

B V c j Va Y Z j i ^ a ^ o V g Z
tti

P/N 820-C55N-E00

4. Taste si functii



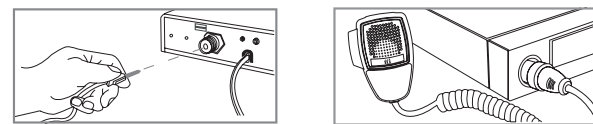
1. Accesorii incluse

TCB-550evo este echipata cu toate accesoriile necesare pentru utilizarea imediata a statiei.

Statie radio TCB-550evo	1 bucata
Microfon cu cablu	1 bucata
Support montaj statie	1 bucata
Surub si saiba de cauciuc	2 bucati
Surub cu saiba (pentru suport statie)	3 bucati
Surub cu saiba (pentru suport microfon)	2 bucati
Support microfon	1 bucata

2. Instalare

Instalarea cu suportul de montaj



- 1) Puneti suportul de montaj in locul unde urmeaza sa instalati statia.
 - 2) Faceti gauri si fixati suportul de montaj. Fixati statia de suport.
 - 3) Conectati cablul antenei in conectorul marcat cu "ANT" situat pe panoul din spate al statiei.
 - 4) Alimentati statia radio cu ajutorul mufei de bricheta incluse.
 - 5) Fixati suportul de microfon in locatia dorita folosind suruburile incluse.
 - 6) Conectati microfonul la statie.
- Acum statia radio poate fi folosita.

- 1) Buton control volum / Pornire-Opreire statie

- 2) Ecran LCD

- 3) Buton Squelch / DSS
Reglare manuala: Rotiti butonul in sens invers acelor de ceasornic pana auziti zgomotul de fundal and apoi rotiti usor in sensul acelor de ceasornic pana cand zgomotul dispare. Astfel, obtineti cea mai buna sensibilitate la receptie.
DSS : Rotiti butonul in sens invers acelor de ceasornic pana auziti un clic. Nivelul squelch-ului este reglat dinamic.

- 4) Canale de urgenta 9,19 / VOX
Apasati scurt pentru a activa canalele de urgenta (9 sau 19).
Apasati lung pentru a activa functia VOX.

- 5) AM.FM / Scanare canale
Apasati scurt pentru a schimba modulatia AM / FM.
Apasati lung pentru a activa functia de scanare canale.

- 6) Buton crestere numar canal

- 7) Buton descrestere numar canal

- 8) Conector microfon

- 9) Conector antena

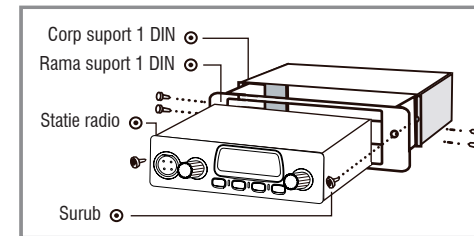
- 10) Conector difuzor extern

- 11) Alimentare 13.2V / 24V DC

- 12) Selectie norma
Tineti apasat butonul AM/FM in timp ce porniti statia pentru a accesa interfata de selectare a normei. Folositi tastele Su/Jos pentru a ajunge la norma dorita.

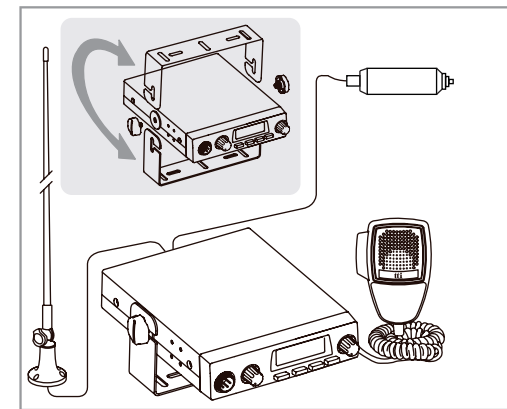
- 13) Mod meniu
Tineti apasat butonul CH9/19 in timp ce porniti statia pentru a accesa meniul. Folositi tasta AM/FM pentru a alege optiunea dorita.

Instalare in compartimentul pentru dispozitive audio



- 1) Instalati corpul suportului 1 DIN in compartimentul pentru dispozitive audio. (utilizati clapetele de blocare.)
- 2) Fixati statia radio in rama suportului 1 DIN. Fixati apoi statia in corpul suportului 1 DIN.
- 3) Fixati totul cu suruburi.

Instalarea antenei



- 1) Pozitionati antena cat mai sus posibil.
- 2) Cu cat este mai lunga antena, cu atat este mai mare distanta de comunicare.
- 3) Incercati sa instalati antena in centrul suprafetei alee.
- 4) Asigurati-va ca aveti o conexiune solida de masa metal-metal.
- 5) Fiti atenti sa nu deteriorati cablul antenei in timpul instalarii.

Atentie: Nu emiteti niciodata fara antena.

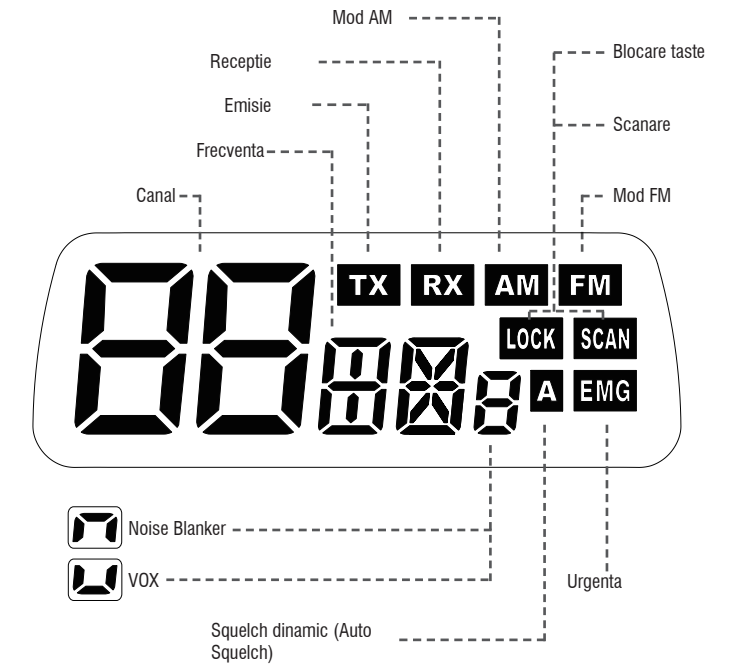
<MENIU>

Pictograma	Functie	Setari
bp	Sunet taste	On, Off
Vo	VOX	Hi, Mid, Lo
nb	Noise Blanker	On, Off
to	Time-out Timer	1-99 sec., Off
bc	Culoare lumina fundal	Albastru, Violet, Rosu
d l	Intensitate lumina ecran	Hi, Lo

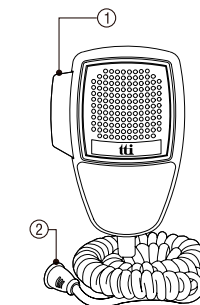
<Tabel norme>

Simbol	Pictograma	Tara
EC	EE	Europa 40ch. FM 4W
EU	EU	Europa 40ch. AM/FM 4W
D	d	Germania 80ch. FM 4W, 40ch. AM 4W
I2	I2	Italia 34ch. AM/FM 4W
I	I	Italia 40ch. AM/FM 4W
UE(EU/UK)	UE	UK 40ch. FM 4W (frecvente engleze) + CEPT 40ch. FM 4W(EC)
UK	UH	UK 40ch. FM 4W (frecvente engleze)
PL	PL	Polonia 40ch. AM/FM 4W (Frecvente poloneze : 5KHz)
F	F	Franta 40ch. FM 4W, 40ch AM 4W
E	E	Spania 40ch. AM/FM 4W

3. Ecranul ICD



5. Microfon



- 1) Buton PTT
- 2) Conector 4 pini

6. Utilizarea statiei

- 1) Asigurati-va ca ati conectat microfonul la statie.
- 2) Asigurati-va ca ati alimentat statia corect.
- 3) Asigurati-va ca ati conectat antena.
- 4) Rotiti butonul de squelch complet spre stanga.
- 5) Porniti statia si reglati volumul.
- 6) Reglati squelch-ul la nivelul optim.
- 7) Selectati canalul dorit.
- 8) Pentru a emite apasati butul PTT si vorbiti catre microfon.
- 9) Eliberati butonul PTT pentru a receptiona.

7. Probleme si solutii

Daca intampinati probleme cu statia dumneavoastra, mai intai verificati alimentarea. O alimentare defectuasa poate cauza probleme cum ar fi lipsa emisiei, lipsa receptiei, lipsa sunet sau sunet slab. Asigurati-va ca ati conectat microfonul si antena. Daca problema persista, resetati statia dupa cum urmeaza.

- 1) Opriti statia.
- 2) Apasati in acelasi timp tasta AM/FM si tasta 9/19 in timp ce reporniti statia.

Aceasta procedura va reseta statia, memoria va fi stearsa si parametrii vor reveni la valorile din fabrica. Aceasta procedura ar trebui sa rezolve majoritatea problemelor. Daca problema persista, apelati la un centru service autorizat.

8. Declaratie CE



Statia radio TCB-550evo respecta cerintele Directivei RED 2014/53/EU.
Acest simbol indica faptul ca acest echipament functioneaza in benzi de frecventa nearmonizate si/sau poate fi supus conditiilor de licenta in tara de utilizare.
Asigurati-va ca utilizati versiunea corecta a acestei statii si ca ati programat corect statia.

Aceasta statie poate fi utilizata fara licenta in urmatoarele tari: Austria, Belgia, Bulgaria, Cipru, Cehia, Danemarca, Estonia, Finlanda, Franta, Germania, Grecia, Ungaria, Islanda, Irlanda, Italia, Letonia, Lituania, Luxemburg, Malta, Tarile de Jos, Norvegia, Polonia, Portugalia, Romania, Slovacia, Slovenia, Spania, Suedia, Elvetia si U.K.

9. Cerinte de siguranta

Alimentati statia doar la o tensiune 13.2 / 24V DC. Asigurati-va ca statia este oprita inainte de a o conecta la sursa de alimentare. Respectati polaritatea chiar daca statia are protectie la polaritatea inversata :

- * Rosu: Pol pozitiv (+)
- * Negru: Pol negativ (-)

Aceleasi culori sunt prezente pe baterie si pe cutia de sigurante a vehiculului.

10. Specificatii tehnice

GENERAL	
Canale	40 (vezi tabelul de norme si frecvente)
Interval frecvente	26.965 MHz ~ 27.405 MHz
Mod operare	F3E (FM), A3E (AM)
Control frecventa	PLL Synthesizer
Toleranta frecventa	0.002%
Temperatura de lucru	-10 to +55 °C
Microfon	4 pini
Alimentare	13.2 / 24V DC ± 15%
Dimensiuni	124 (W) x 135 (L) x 37 (H)
Greutate	590 g
Conector antena	SO-239
Putere de iesire	Duty cycle 10% 4 Watts @ 13.2V DC
Modulatie	AM: de la 85% la 95% FM: 1.8KHz ± 0.2KHz
Raspuns frecventa	300Hz to 3000Hz
Impedanta	50ohms, neechilibrat
Supresia armonica	< -36dBm
Consum	AM 1.6A Max.
Sistem receptie	Superheterodina dubla conversie
Frecvente IF	Dubla conversie 1st 10.695MHz/2nd 455KHz
Sensibilitate	0.7µV for 10dB(S+N)/N in AM Mode 0.7µV for 20dB SINAD in FM Mode
Putere audio	2W @ 8ohm
Distorsiune audio	< 8% @ 1KHz
Respingere imagine	> 60dB
Respingere canal adiacent	> 60dB
Emisii parazite	< -57dBm
Raspuns frecventa	300Hz to 2500Hz
Difuzor incorporat	8ohms, rotund
Squelch	Reglabil; prag < 1µV DSS; < 2µV

* Specificatiile pot fi modificate fara notificare prealabila.

11. Restrictii privin utilizarea acestei statii

Tara	Norma	Restrictii
BELGIA ELVETIA	EU F EC	40 Ch - 4W FM - licenta individuala necesara 40 Ch - 4W AM - licenta individuala necesara
DANEMARCA,NORVEGIA LUXEMBOURG,CEHIA	EC	40 Ch - 4W FM - Fara licenta
FINLANDA,PORTUGALIA FRANTA,OLANDA	EU F EC	40 Ch - 4W FM - Fara licenta 40 Ch - 4W AM - Fara licenta
GERMANIA	D EU D2 EC	80 Ch - 4W FM - licenta individuala necesara 40 Ch - 4W AM - licenta individuala necesara 40 Ch - 4W AM - Use ch 4-15 only 40 Ch - 4W FM - Fara licenta 12 Ch - 4W AM - licenta individuala necesara fx permis: de la 26.960 la 27.410 MHz "BAPT 222 ZV 104"
GRECIA	E EU F I EC	40 Ch - 4W FM - Fara licenta 40 Ch - 4W AM - Fara licenta T/R 20-02
IRLANDA	E EU F I EC	40 Ch - 4W FM - Fara licenta 40 Ch - 4W AM - Fara licenta S.I. No 436 of 1998. WIRELESS TELEGRAPHY ACT, 1926 (sectiunea) (SCUTIRE STATII RADIO CB) ORDIN, 1998
ITALIA	E EU F I EC I2	40 Ch - 4W FM - General authorization is required 40 Ch - 4W AM - General authorization is required 34 Ch - 4W FM 34 Ch - 4W AM(ERP) *AM mode allowed on ch1-23 only PNF din DM 08.07.02 NOTES 49 A-B-C-D-E-G
SPANIA	E EU F EC	40 Ch - 4W FM - licenta individuala necesara 40 Ch - 4W AM - licenta individuala necesara Art. 57 - Lgea 11/1998 din 24 April
SUEDIA	EU F EC	40 Ch - 4W FM - Fara licenta 40 Ch - 4W AM - licenta individuala necesara
UK	UK EU	40 Ch - 4W FM - Fara licenta 40 Ch - 4W AM - Fara licenta
POLONIA	PL EU EC	40 Ch - 4W FM / AM - Fara licenta

<< Declaratie de conformitate >>

Noi, TTI Tech Co., Ltd. (#1312 361 Simindaero Dongan-gu Anyang-si Gyeonggi-do Korea) declaram pe propria raspundere ca acest echipament respecta cerintele esentiale ale Directivei (RED) 2014/53/EU si ca au fost efectuate masuratorile aplicabile.

Tip echipament: STATIE RADIO CB

Model: TCB-550evo

Versiune (unde se aplica) :

Aceasta statie este conforma cu urmatoarele standarde:

EN 62311:2008
EN 50665:2017
EN 62368-1:2014+A11:2017
EN 301 489-1 V2.2.3:2019-11
EN 301 489-13 V1.2.1:2002-08
EN 300 433 V2.1.1 (2016-05)



N. Y. Kim
Director

Korea, Oct. 2022

Semnatura